

May 22, 2026

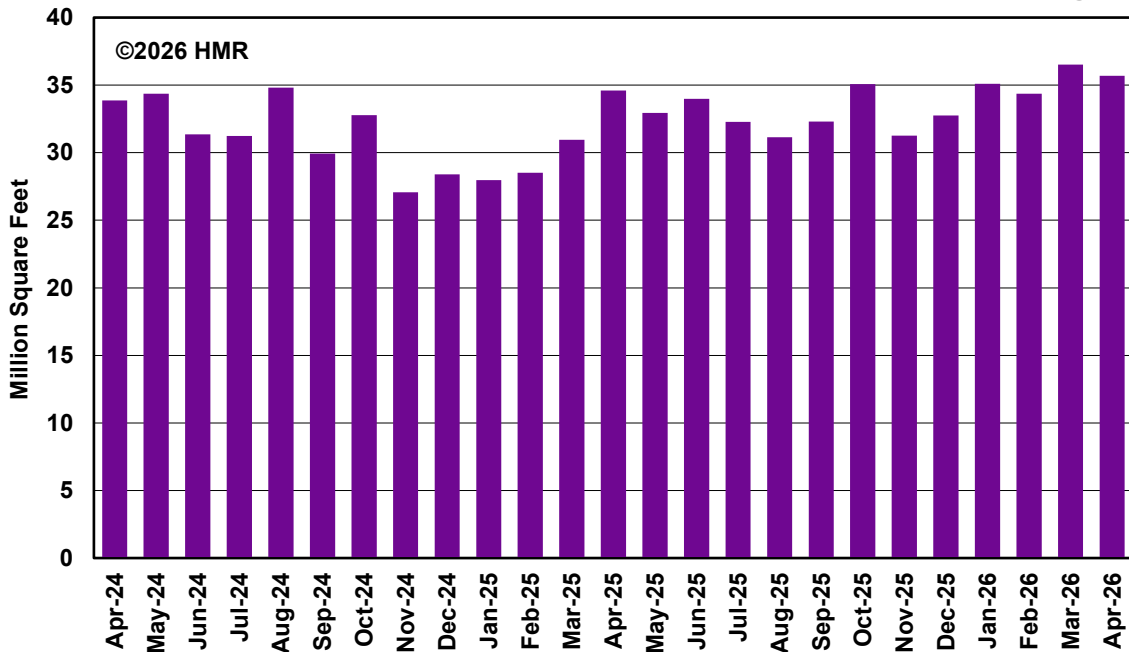
VOLUME CIV

NUMBER 21

Hardwood Market Report

Lumber News Since 1922, A Part of Fastmarkets

US Manufacturers' Shipments of Solid Wood Flooring



Composite Indices of HMR Prices for North American Hardwood Industrial Lumber and Timbers

\$545
Month Ago

\$543
Current

\$548
Year Ago



A part of

Fastmarkets

5101 Wheelis Dr., Ste 312 | Memphis, TN 38117-4550
Web: hmr.com | Ph: 901-767-9126

ANDY JOHNSON - Editor - andy.johnson@fastmarkets.com
TONY BURBECK - Senior Price Reporter - tony.burbeck@fastmarkets.com
BEN STANLEY - Price Reporter - ben.stanley@fastmarkets.com
MICHAEL CONNOLLY - Price Reporter - michael.connolly@fastmarkets.com

Advertising sales - brian.cruzen@fastmarkets.com
Advertising - hmr.ads@fastmarkets.com
Subscriptions - client.services@fastmarkets.com

ASH					PECAN & HICKORY				
	FAS	#1C	#2A		FAS	#1C	#2A	#2B	
4/4	1410	610	260		4/4	880	570	405	300
5/4	1520	755	325		5/4	900	590	445	335
6/4	1570	840	400		6/4	995	650	480	365
8/4	1780	925	435		8/4	1040	715	510	365
1F PRICES \$10/M LESS THAN FAS					POPLAR				
BEECH					FAS	#1C	#2A	#2B	
4/4	570	475	355	275	4/4	1020	555	355	275
5/4	580	500	380	290	5/4	1030	555	365	275
6/4	600	535	420	300	6/4	1050	555	365	285
					8/4	1070	555	370	290
1F PRICES \$10/M LESS THAN FAS					SYCAMORE				
COTTONWOOD					FAS	#1C	#2A		
4/4	905	680	270	225	5/8	455	435	360	
5/4	905	680	290	240	4/4	460	440	360	
					5/4	465	445	360	
SAP GUM					6/4	495	475	370	
	FAS	#1C	#2A	#2B	8/4	535	515	395	
4/4	485	450	275	215	WILLOW				
5/4	515	480	315	250	FAS	#1C	#2A	#2B	
6/4	530	495	335	255	4/4	550	340	215	190
8/4	570	535	355	260	5/4	560	350	225	200
					6/4	580	360	225	200
HACKBERRY					8/4	590	365	225	200
	FAS	#1C	#2A		MIXED SOFT HARDWOODS				
4/4	530	480	295		FAS	#1C	#2A	#2B	
5/4	555	505	320		4/4	265	240	220	170
6/4	595	545	340		5/4	335	310	245	215
8/4	640	590	350		6/4	400	375	265	220
					8/4	440	415	285	225
SOFT MAPLE - WHAD					FRAMESTOCK - AIR DRIED				
	FAS	#1C	#2A		4/4 OAK S2S	(375-500)	[+10/NC]		
4/4	950	650	385		4/4 MIXED S2S	(380-525)	[+10/NC]		
5/4	975	760	445		CANTS - GREEN				
					500 [+10]	(425-525)	[+25/NC]		
SOFT MAPLE - WHND					TIES - 7x9 - GREEN				
	FAS	#1C	#2B		<i>SOUTHERN - WEST - 9'</i>				
4/4	570	515	320		CROSSTIES	(36.75-41.00)	Per Pc.		
5/4	590	550	340		<i>SOUTHERN - EAST - 8½'</i>				
6/4	590	550	380		CROSSTIES	(32.00-40.00)	Per Pc.		
8/4	605	565	380		BOARD ROAD - GREEN				
					555	(500-610)			
RED OAK					F. O. B. MILLS - SOUTHERN AREA				
	FAS	#1C	#2A	#3A	Estimate of FOB Southern mill point average market prices for well				
4/4	980	650	425	325	manufactured Southern hardwoods in truckload and greater quantities.				
5/4	1040	660	470	380	Stocks are random widths and lengths, green, rough, and graded in				
6/4	1140	685	470	395	accordance with NHLA rules. Prices in US dollars per M'. Prices				
8/4	1175	695	---	---	published in Hardwood Market Report are presented only as a				
FAS&1F ALONE 4/4, 5/4, 6/4, & 8/4 ADD \$0					guide. See statement on back page. ©2026 <i>Hardwood Market Report</i>				
1F PRICES \$10/M LESS THAN FAS									
WHITE OAK									
	FAS	#1C	#2A	#3A					
4/4	2185	1025	495	415					
5/4	2570	1035	510	440					
6/4	2800	1080	520	450					
8/4	3090	1155	---	---					
FAS&1F ALONE 4/4, 5/4, 6/4, & 8/4 ADD \$0									
1F PRICES \$10/M LESS THAN FAS									

Prices in this matrix are for kiln dried lumber **measured before kiln drying**. The first figure listed for each grade and thickness is the predominant index price; figures in parentheses are the prevailing range of index prices. Bold figures indicate change. Prices published in **Hardwood Market Report** are presented only as a guide. See statement on back page.

© 2026 *Hardwood Market Report*

		FAS		#1C Common		#2A Common	
ASH	4/4	2045	(1860- 2105)	1155	(1115-1290)	745	(710-815)
	8/4	2645 [-100]	(2450-2765)	1580	(1385 -1625)	1050 [-50]	(960-1160)
COTTONWOOD	4/4	1000	(940-1055)	745	(690-820)	---	---
RED OAK	4/4	1435 [+25]	(1330-1605)	1000	(910-1135)	700 [+10]	(650-745)
	5/4	1685	(1630-1755)	1150	(1095-1265)	795	(715-905)
WHITE OAK	4/4	3475	(3175-3775)	1450 [-15]	(1365-1505)	1070	(905-1140)
	5/4	4160	(3935-4290)	2060	(1855-2175)	1195	(1115-1250)
POPLAR	4/4	1300 [+10]	(1120-1355)	695 [+10]	(650-755)	465	(420-575)
	5/4	1380	(1260-1515)	775	(720-840)	550	(490-575)
	6/4	1400 [-25]	(1325 -1550)	810	(770-870)	---	---
	8/4	1430	(1385-1560)	865	(825-910)	---	---

Prices in this matrix are for kiln dried lumber **measured after kiln drying ("net tally")**. The first figure listed for each grade and thickness is the predominant index price; figures in parentheses are the prevailing range of index prices. Bold figures indicate change. Prices published in **Hardwood Market Report** are presented only as a guide. See statement on back page. © 2026 *Hardwood Market Report*

		FAS (Net)		#1 Common (Net)		#2A Common (Net)	
ASH	4/4	2200	(2000- 2265)	1240	(1200-1385)	800	(765-875)
	8/4	2845 [-105]	(2635-2970)	1695	(1490 -1745)	1130 [-50]	(1035-1250)
COTTONWOOD	4/4	1075	(1010-1135)	800	(740-880)	---	---
RED OAK	4/4	1540 [+25]	(1430-1725)	1075	(980-1220)	750 [+10]	(700-800)
	5/4	1815	(1755-1890)	1235	(1180-1360)	855	(770-970)
WHITE OAK	4/4	3735	(3415-4065)	1560 [-15]	(1470-1620)	1150	(975-1225)
	5/4	4470	(4230-4615)	2210	(1990-2335)	1285	(1200-1345)
POPLAR	4/4	1400 [+10]	(1205-1455)	745 [+10]	(700-810)	500	(450-620)
	5/4	1485	(1355-1625)	835	(775-900)	590	(525-620)
	6/4	1505 [-30]	(1425 -1665)	870	(830-935)	---	---
	8/4	1540	(1490-1675)	930	(885-980)	---	---

If you would like to participate in HMR's pricing surveys, please contact ben.stanley@fastmarkets.com to get started. All information is kept confidential and is vital to accurate reporting. © 2026 *Hardwood Market Report*

SOUTHERN AREA

Comments

Department of Commerce anti-dumping investigations into imported engineered wood products may be creating a pivot back to domestic hardwoods in the South.

A hardwood buyer at a large Southern secondary manufacturer said anti-dumping investigations, and resulting duties, into imported engineered wood from Asia have made them look for more affordable domestic sources. Poplar, especially #1C, is benefiting from that approach, and recent upward price momentum for Sap Gum and Mixed Soft Hardwoods are also potential indicators.

ASH: A slight drop in domestic and international demand for Southern Ash, once kiln dried, led to a flurry of activity on the price front. Thick stock is the most impacted, with big declines for the listings and ranges for both 8/4 Fas and #2A. Kiln dried 8/4 #1C also sees the lower ends of its ranges fall, while the upper ends of the ranges for 4/4 Fas also drop. Good late spring weather continues in the South, ensuring loggers of lowland species like Ash are facing few obstacles in the forests.

SAP GUM: After four straight weeks of increases to green 4/4 and 5/4 #1C&Btr Sap Gum, prices stabilized this week. A number of secondary manufacturers are known to be seeking out the species, but recent price gains have resulted in a balance between interest and production for an item with relatively limited domestic utility.

#2A&3A OAK: The market for green #2A&3A Oak remains static in the South. Most contacts report no shortages of Red and White Oak logs around the region, though one located on the Eastern seaboard said his supplies of #2A&3A Red Oak are “a little low.” Due to a range of factors, the needs of formerly consistent buyers have diminished, however. Residential and truck trailer flooring plants continue to hold back on purchasing big volumes, while crosstie quotas and sluggish demand for other industrials limit the other typical #2A&3A Oak outlets. As a result, published prices do not change in this edition.

RED OAK: Increasing international demand is an important development for kiln dried Red Oak in the South this week. Reported prices advance the listings and ranges for 4/4 Fas and #2A. A trusted contact at a large Southern sawmill said he has noticed a bump in interest from India, particularly for kiln dried #2A. Demand from China and

Vietnam is known to be steady. The market for green Red Oak is flat, with reported prices yielding no changes.

WHITE OAK: Like several species, White Oak is not performing particularly well in the marketplace. That said, one sawmill contact reported good demand for green 4/4 Fas&1f as well as “good prices if you can find them.” Sluggish exports of kiln dried 4/4 #1C to Southeast Asia are impacting prices, with the listings and ranges falling. Reported prices show that all other published listings and ranges stand.

PECAN & HICKORY: Like in the Appalachian region, demand for Pecan & Hickory produced in the Southern region is usually described as good but well balanced by the availability of logs and overall production. Prices in observed trading reveal no need for altering the listings.

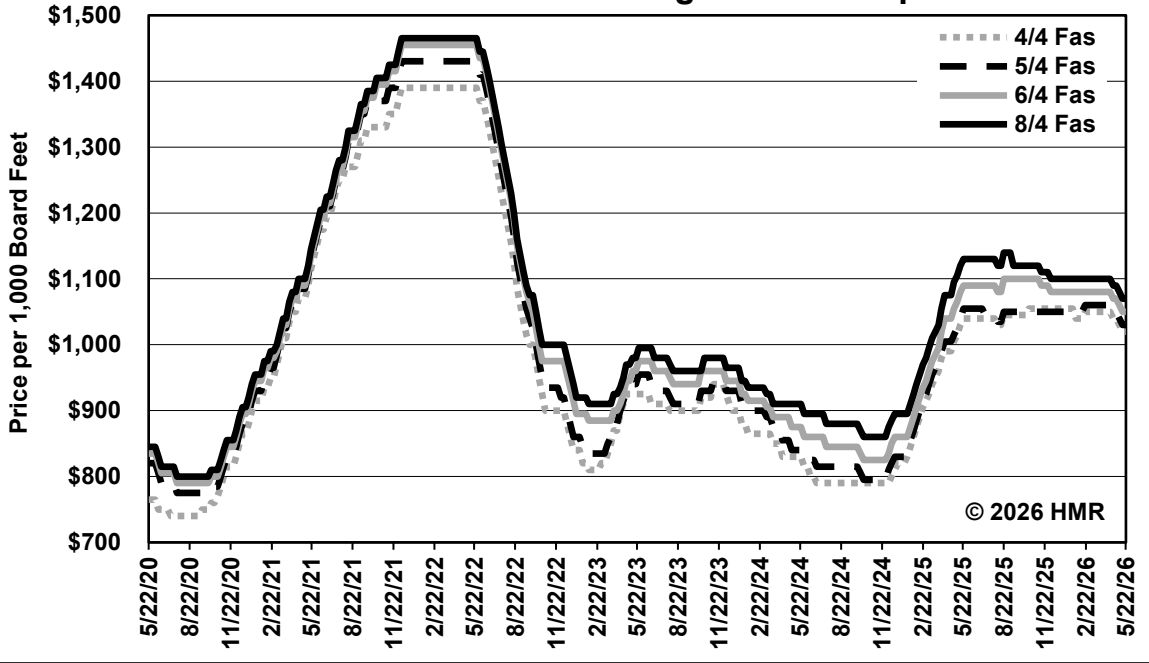
POPLAR: Production of green Poplar remains high but is well balanced with demand in the South. On the kiln dried side, reported prices drive some changes to the published figures. Although some contacts note downward price pressure, additional information received on the upper end of the market raises the listings for 4/4 #1C&Btr. Conversations with multiple contacts bear out higher demand for these items. “The market for upper grade Poplar is great right now,” one seller said. There is less interest in thick stock, with the listings and lower ends of the ranges for kiln dried 6/4 Fas falling this week.

FRAMESTOCK, CANTS, TIES, & BOARD ROAD: Reported prices show plenty of movement in the market for Southern industrials. Slightly elevated demand for framestock continues, with the lower ends of the ranges for both Oak and Mixed Species items increasing. Demand for hardwood pallet cants in the region enjoyed a bump this week, with several contacts reporting price gains. As a result, both the listing and the lower end of the cant range rise.

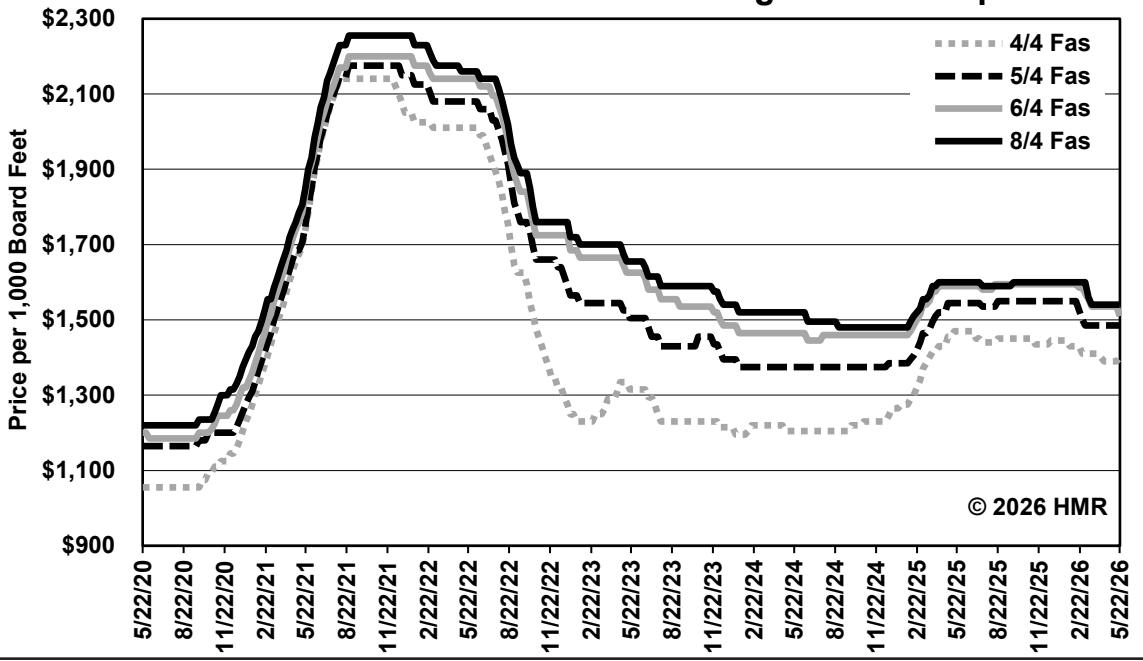
Tie treaters are keeping purchasing quotas in place with most suppliers. Prices observed for 7x9 crossties show little movement on either side of the Mississippi River.

Several contacts have talked about new oil projects coming online in the South, which could spur future demand for mat timbers, but pricing information obtained this week keeps the board road listing and range intact.

Southern Green 4/4 through 8/4 Fas Poplar



Southern Kiln Dried Net 4/4 through 8/4 Fas Poplar



ASH				HARD MAPLE - UNSELECTED					
	FAS	#1C	#2A	FAS	#1C	#2A	#3A		
4/4	1530 [+30]	870 [+30]	500 [+15]	4/4	1560	960	420	375	
5/4	1560	900	510 [+10]	5/4	1710	980	475	385	
6/4	1660	970	600	6/4	1815	1015	535	400	
8/4	1850	1050	610	8/4	1925	1035	585	415	
BASSWOOD				SOFT MAPLE - SAP&BTR					
	FAS	#1C	#2A	#2B	FAS	#1C	#2A		
4/4	725	400	200	160	4/4	1925 [-20]	845	350	
5/4	800	400	215	165	5/4	2015	910	385	
6/4	835	415	230	175	6/4	2020	940	385	
8/4	850	440	245	185	8/4	2225	995	430	
9/4	880	465	250	200	SOFT MAPLE - UNSELECTED				
BEECH				FAS	#1C	#2A	#3A		
4/4	695	380	270	225	4/4	1790	745	325	
5/4	800	450	290	240	5/4	1860	805	355	
6/4	810	530	350	290	6/4	1870	835	360	
8/4	815	545	355	305	8/4	1950	850	400	
BIRCH				RED OAK					
	FAS	#1C	#2A	FAS	#1C	#2A	#3A		
4/4	875	500	355	4/4	1065 [-10]	670	545	455	
5/4	965	575	400	5/4	1140	755	595	500	
6/4	1030	635	435	6/4	1140	760	615	520	
8/4	1055	660	450	8/4	1165	775	620	530	
FAS&1F ALONE ADD \$0				FAS&1F ALONE ADD \$0					
CHERRY				WHITE OAK					
	FAS	#1C	#2A	#3A	FAS	#1C	#2A	#3A	
4/4	1095	550	305	280	4/4	2360	1050 [-10]	545	445
5/4	1105	560	320	285	5/4	2570	1125	565	475
6/4	1185	595	325	295	6/4	2785 [-75]	1210 [-50]	585	510
8/4	1230	600	375	305	8/4	3175	1310	---	---
CHERRY - NORTH CENTRAL				FAS&1F ALONE					
	FAS	#1C	#2A	#3A	4/4 ADD	\$0	#2A ALONE		
4/4	1160 [+15]	645 [+15]	310	280	5/4 ADD	\$0	4/4 560		
5/4	1165	645 [+15]	325	285	6/4 & 8/4 ADD	\$0			
6/4	1250	660 [+15]	345	295	HICKORY				
8/4	1310	700 [+15]	375	310		FAS	#1C	#2A	#2B
HICKORY				FAS	#1C	#2A	#2B		
4/4	1010	640	570	480	4/4	1010	640	570	480
5/4	1070	650	570	480	5/4	1855	1090	---	
6/4	1100	655	570	485	6/4	2000	1100	---	
8/4	1195	775	585	495	8/4	2115	1105	---	
HARD MAPLE - #1&2 WHITE				ALL 1F PRICES \$10/M LESS THAN FAS					
	FAS	#1C	#2A	F. O. B. MILLS - APPALACHIAN AREA					
4/4	1740	1040	625	Estimate of FOB Appalachian mill point average market prices for well manufactured Appalachian hardwoods in truckload and greater quantities. Stocks are random widths and lengths, green, rough, and graded in accordance with NHLA rules. Prices in US dollars per M'. Prices published in Hardwood Market Report are presented only as a guide. See statement on back page.					
5/4	1855	1090	---	© 2026 Hardwood Market Report					
6/4	2000	1100	---						
8/4	2115	1105	---						
Pricing is also posted weekly on hmr.com.									

WHITE OAK - WHND FAS #1C SW 4/4 1775 980 545 5/4 1805 1030 575 1F PRICES \$10/M LESS THAN FAS	FRAMESTOCK - AIR DRIED 4/4 OAK S2S (295-420) 4/4 MIXED S2S (305-420)
POPLAR FAS #1C #2A #2B 4/4 1005 [-25] 545 390 250 5/4 1015 [-25] 550 395 300 6/4 1060 620 480 320 8/4 1070 680 505 325 10/4 1080 715 560 370 12/4 1090 725 580 380 16/4 1145 755 595 385 1F PRICES \$10/M LESS THAN FAS	CANTS - GREEN 500 (440-550)
WALNUT FAS #1C #2A 4/4 3270 [-50] 2100 [-30] 1140 5/4 3300 [-50] 2170 [-30] 1145 [-10] 6/4 3535 2270 [-30] 1155 [-10] 8/4 3685 2340 [-30] 1220 1F PRICES \$100/M LESS THAN FAS	TIES - 7x9 - GREEN SOUTHERN APPALACHIAN - 8½' CROSSTIES (33.20-38.00) Per Pc. NORTHERN APPALACHIAN - 8½' CROSSTIES (32.20-37.00) Per Pc. BOARD ROAD - GREEN 570 (520-650) If you would like to participate in HMR's pricing surveys, please contact tony.burbeck@fastmarkets.com to get started. All information is kept confidential and is vital to accurate reporting. © 2026 <i>Hardwood Market Report</i>

Comments

Midyear is quickly approaching and the hardwood market has become a bit disjointed after catching a decent rhythm in early spring, when shortages drove price increases for several items. However, many green items are now plentiful at the same time yards are closely monitoring receipts—or lowering them—because purchase orders for certain kiln dried items are coming in at a slower pace. The ongoing conflict in the Middle East and resulting escalations in overland and ocean shipping costs are causing market uncertainty. Regarding freight costs, one prominent exporter said, “Lumber prices haven’t come up enough to cover the additional shipping costs.” That contact is paying roughly two-thirds of a \$2,250 freight cost increase, while his customer is covering the remainder.

Longtime industry contacts also state that whitewoods currently comprise a higher-than-usual share of production at area sawmills, resulting from elevated Red Oak, White Oak, and Cherry log exports. “At the same time, we are not being overrun with calls from customers needing Hard Maple or Soft Maple,” one contact said.

ASH: Ash’s share of total Appalachian region sawmill production is low relative to Red Oak, White Oak, and Poplar. Production is hindered by limited availability of non-EAB-infested logs. Some mills located in areas where

pockets of healthy Ash still exist have no trouble moving their limited production. Other mills have chosen not to produce Ash out of concern that they wouldn’t be able guarantee steady monthly volumes to customers. Limited supply amid decent demand lifts the listings for green 4/4 #2A&Btr and 5/4 #2A. Information also advances the listings for kiln dried 8/4 Fas and the high-end ranges for 4/4 Fas.

CHERRY: Most survey comments about Cherry remain favorable, with one producer’s description of “very good” demand from China this week echoing comments from other exporters in prior weeks. Transactions reveal continued upward price movement for certain green items in the North Central producing region. The 4/4 Fas&1f and all #1C listings are raised. Thinner kiln dried items have more energy than thicker stocks. The North Central 4/4 and 5/4 Fas figures are raised, as are the 4/4 #2A figures.

HICKORY: Demand for Hickory remains decent from solid wood flooring plants. Interest from the cabinet sector is mediocre. Supplies of this species lagged demand for several weeks but availability more closely matches the market’s needs this week. Recent increases have all the green listings and most kiln dried figures in order. The

(Continued on Page 9)

Prices in this matrix are for kiln dried lumber **measured before kiln drying**. The first figure listed for each grade and thickness is the predominant index price; figures in parentheses are the prevailing range of index prices. Bold figures indicate change. Prices published in **Hardwood Market Report** are presented only as a guide. See statement on back page. © 2026 *Hardwood Market Report*

		FAS		#1 Common		#2A Common	
ASH	4/4	2050	(1900-2260)	1255	(1150-1390)	865	(775-955)
	5/4	2145	(2025-2330)	1360	(1300-1530)	930	(885-1035)
	6/4	2370	(2240-2555)	1470	(1370-1585)	1085	(1045-1235)
	8/4	2540 [+25]	(2300-2795)	1610	(1465-1695)	1225	(1115-1305)
BASSWOOD	4/4	1165	(1070-1275)	650	(610-715)	475	(445-525)
	5/4	1310	(1215-1400)	720	(650-800)	---	-----
	9/4	1455	(1360-1565)	930	(875-1005)	---	-----
CHERRY	4/4	1665	(1540-1820)	1035	(905-1080)	600	(510-650)
	5/4	1770	(1655-1920)	1115	(1045-1225)	605	(575-670)
	6/4	1860	(1755-2045)	1150	(1115-1255)	---	-----
	8/4	2040	(1850-2195)	1295	(1200-1395)	---	-----
CHERRY <i>North Central</i>	4/4	1770 [+20]	(1655-1910)	1070	(960-1140)	675 [+25]	(635-745)
	5/4	1865 [+20]	(1770-2030)	1120	(1000-1185)	650	(625-755)
	6/4	1925	(1800-2050)	1350	(1235-1395)	---	-----
	8/4	2100	(1910-2215)	1375	(1280-1490)	---	-----
HICKORY	4/4	1865	(1670-1980)	1160	(1065-1265)	860	(745-955)
HARD MAPLE <i>#1&2 White</i>	4/4	2135 [-45]	(1970-2265)	1395 [+20]	(1255-1505)	930 [-15]	(860-1020)
	5/4	2505 [-50]	(2275-2645)	1440	(1340-1535)	860	(800-945)
	6/4	2715	(2480-2875)	1535	(1415-1610)	---	-----
	8/4	2910	(2695-3135)	1585	(1500-1630)	---	-----
HARD MAPLE <i>Unselected</i>	4/4	2040 [-45]	(1905-2180)	1295 [+20]	(1165-1380)	620 [-10]	(595-675)
	5/4	2355 [-50]	(2230-2565)	1310	(1220-1400)	710	(680-785)
	6/4	2600	(2400-2785)	1400	(1295-1460)	---	-----
	8/4	2790	(2595-3010)	1465	(1375-1585)	---	-----
SOFT MAPLE <i>Sap&Btr</i>	4/4	2485	(2330-2735)	1240	(1115-1305)	700 [-25]	(605-800)
	5/4	2775	(2585-2910)	1260	(1140-1350)	790	(720-835)
	6/4	2820	(2610-3030)	1415	(1330-1490)	945	(835-1010)
	8/4	2910	(2750-3175)	1510	(1405-1640)	1045	(965-1115)
SOFT MAPLE <i>Unselected</i>	4/4	2280	(2135-2425)	945	(835-985)	510 [-25]	(465-605)
	5/4	2640	(2505-2750)	955	(835-1025)	625	(560-680)
	6/4	2725	(2485-2895)	1225	(1150-1315)	900	(830-975)
	8/4	2815	(2610-3015)	1350	(1260-1475)	985	(920-1045)
RED OAK	4/4	1600 [+10]	(1440-1695)	1210	(1120-1330)	815 [+10]	(750-915)
	5/4	1705	(1615-1860)	1305	(1210-1395)	865	(780-930)
	6/4	1975 [-25]	(1855-2160)	1395	(1330-1485)	1025	(975-1115)
	8/4	2090	(1900-2225)	1510	(1445-1650)	1115	(1035-1175)

Prices in this matrix are for kiln dried lumber **measured before kiln drying**. The first figure listed for each grade and thickness is the predominant index price; figures in parentheses are the prevailing range of index prices. Bold figures indicate change. Prices published in **Hardwood Market Report** are presented only as a guide. See statement on back page. © 2026 *Hardwood Market Report*

		FAS		#1 Common		#2A Common	
WHITE OAK	4/4	3500	(3130-3810)	1580	(1460-1735)	1160	(1070-1305)
	5/4	4040	(3860-4465)	2185	(1995-2275)	1360	(1280-1490)
	6/4	4615 [-25]	(4260-4965)	2370	(2285-2620)	1595	(1440-1695)
	8/4	5120 [-100]	(4780-5610)	2885	(2720-3160)	1865	(1725-1965)
POPLAR	4/4	1325	(1235-1425)	755	(695-840)	460	(425-510)
	5/4	1425	(1350-1535)	810	(770-905)	560 [-20]	(515-595)
	6/4	1450	(1375-1560)	875	(830-930)	650	(605-705)
	8/4	1490	(1365-1580)	895	(835-970)	700	(630-745)
WALNUT	4/4	4960	(4455-5270)	3170 [-25]	(2980-3450)	2145	(1935-2260)
	5/4	5095 [+20]	(4635-5425)	3250	(3030-3450)	2240	(1960-2335)
	6/4	5240 [+50]	(4905-5750)	3530	(3280-3835)	2245	(2105-2420)
	8/4	5390	(5010-5930)	3705	(3450-4035)	2255	(2115-2490)

APPALACHIAN COMMENTS (Cont'd from Page 7)

only dry-side changes lift the high-end ranges for 4/4 Fas.

HARD MAPLE: Markets are struggling to absorb Appalachian Hard Maple output. Fas is the weakest grade, described as a “dog” by one longtime producer. Demand is better for #1C and #2A than for Fas but isn’t considered strong. Lower reported prices prompt reductions to the listings and noted ranges for kiln dried 4/4 Fas, 5/4 Fas, and 4/4 #2A in both color sorts. Conversely, information increases the listings for 4/4 #1C in each color classification. All the green listings stand pat.

SOFT MAPLE: Reports are more favorable for kiln dried 4/4 #1C Sap&Btr Soft Maple than for Fas and #2C. Meanwhile, demand for 5/4 Fas isn’t great but is far better than for #1C and #2A. The listings and low-end ranges for kiln dried 4/4 #2A are reduced in both color selections, but all other kiln dried figures remain intact. Supply and demand for green Soft Maple are closely matched except for Sap&Btr 4/4 Fas&1f, and those listings are reduced.

#2A&3A OAK: Sales of residential solid wood flooring have hit a road bump in May following three decent months; truck trailer flooring sales have been inconsistent from one month to the next. The residential side is keen to maintain or slightly increase Red Oak receipts while controlling White Oak receipts because finished goods are moving slower for the latter than the former. Though myr-

iad reports state #2A&3A Oak are widely available, no changes are warranted to any of the listings, including for #2A Alone Red Oak, following declines in recent weeks.

RED OAK: Sawmills indicate green 4/4 Fas&1f Red Oak are moving at a decent pace. However, supplies exceed demand, and reported prices have a downward bias that lowers the listings. Markets are absorbing all other green output at prices centered on the listings. Most contacts state kiln dried 4/4 and 5/4 Red Oak are moving well, though some loads for export are sitting because booking dates keep getting pushed back amid disruptions to ocean shipping flows resulting from the US war against Iran. Inability to ship to the Middle East—which tends to purchase thicker sizes of Red Oak—along with Chinese and Vietnamese mills sawing thick lumber from US Red Oak logs, are adding downward price pressures. Reported prices warrant reductions to the listings and ranges for 6/4 Fas. Meanwhile, the 4/4 Fas listings and all the 4/4 #2A figures edge higher.

WHITE OAK: Kiln dried White Oak supply and demand are more balanced for 4/4 and 5/4 Fas than for 6/4 and 8/4. Accordingly, sellers are struggling to maintain prior price levels for thicker stocks, as reflected in reductions to the 6/4 and 8/4 Fas listings and ranges. Ongoing price declines for certain green White Oak items have resulted from excess supply rather than decreased demand. This is particularly evident this week for 6/4. Reported prices are

(Continued on Page 11)

Prices in this matrix are for kiln dried lumber **measured after kiln drying ("net tally")**. The first figure listed for each grade and thickness is the predominant index price; figures in parentheses are the prevailing range of index prices. Bold figures indicate change. Prices published in **Hardwood Market Report** are presented only as a guide. See statement on back page. © 2026 *Hardwood Market Report*

		FAS (Net)		#1 Common (Net)		#2A Common (Net)	
ASH	4/4	2200	(2040- 2425)	1350	(1240-1495)	930	(835-1025)
	5/4	2300	(2175-2500)	1465	(1400-1645)	1000	(950-1110)
	6/4	2540	(2400-2740)	1580	(1470-1700)	1170	(1125-1325)
	8/4	2725 [+25]	(2475-3000)	1730	(1575-1825)	1315	(1200-1400)
BASSWOOD	4/4	1250	(1150-1370)	700	(655-770)	510	(480-565)
	5/4	1405	(1305-1505)	775	(700-860)	---	-----
	9/4	1565	(1465-1685)	1000	(940-1080)	---	-----
CHERRY	4/4	1785	(1650-1950)	1110	(970-1160)	645	(550-700)
	5/4	1895	(1775-2055)	1195	(1120-1315)	650	(620-720)
	6/4	2000	(1880-2195)	1240	(1200-1350)	---	-----
	8/4	2190	(1985-2355)	1390	(1290-1500)	---	-----
CHERRY <i>North Central</i>	4/4	1900 [+25]	(1775-2050)	1150	(1030-1225)	725 [+25]	(680-800)
	5/4	2000 [+25]	(1900-2175)	1200	(1075-1270)	700	(670-810)
	6/4	2065	(1930-2200)	1450	(1325-1500)	---	-----
	8/4	2250	(2050-2380)	1475	(1375-1600)	---	-----
HICKORY	4/4	2000	(1790- 2125)	1245	(1145-1355)	925	(800-1025)
HARD MAPLE <i>#1&2 White</i>	4/4	2300 [-50]	(2120-2440)	1500 [+20]	(1350-1615)	1000 [-15]	(925-1100)
	5/4	2695 [-50]	(2445-2850)	1545	(1440-1650)	925	(860-1015)
	6/4	2920	(2670-3100)	1650	(1520-1730)	---	-----
	8/4	3130	(2900-3375)	1700	(1610-1750)	---	-----
HARD MAPLE <i>Unselected</i>	4/4	2195 [-50]	(2050-2345)	1395 [+20]	(1255-1480)	665 [-15]	(640-725)
	5/4	2540 [-50]	(2395-2760)	1405	(1310-1505)	765	(730-845)
	6/4	2795	(2585-3000)	1505	(1390-1570)	---	-----
	8/4	3000	(2790-3240)	1575	(1475-1700)	---	-----
SOFT MAPLE <i>Sap&Btr</i>	4/4	2670	(2500-2935)	1330	(1200-1400)	755 [-25]	(650-860)
	5/4	2975	(2770-3125)	1355	(1225-1450)	850	(775-900)
	6/4	3030	(2800-3250)	1525	(1425-1600)	1015	(900-1085)
	8/4	3125	(2950-3405)	1620	(1510-1760)	1125	(1040-1200)
SOFT MAPLE <i>Unselected</i>	4/4	2445	(2290-2600)	1015	(900-1060)	550 [-25]	(500-650)
	5/4	2830	(2685-2950)	1025	(900-1100)	670	(600-730)
	6/4	2925	(2670-3110)	1315	(1235-1410)	965	(890-1050)
	8/4	3020	(2805-3235)	1450	(1355-1585)	1060	(990-1125)
RED OAK	4/4	1720 [+10]	(1550-1825)	1300	(1200-1425)	875 [+10]	(805-980)
	5/4	1835	(1735-2000)	1400	(1300-1500)	930	(840-1000)
	6/4	2125 [-25]	(2000-2325)	1500	(1425-1595)	1100	(1050-1200)
	8/4	2250	(2050-2400)	1625	(1550-1775)	1200	(1115-1265)

Prices in this matrix are for kiln dried lumber measured after kiln drying (“net tally”). The first figure listed for each grade and thickness is the predominant index price; figures in parentheses are the prevailing range of index prices. Bold figures indicate change. Prices published in **Hardwood Market Report** are presented only as a guide. See statement on back page. © 2026 *Hardwood Market Report*

		FAS (Net)		#1 Common (Net)		#2A Common (Net)	
WHITE OAK	4/4	3775	(3375-4110)	1700	(1575-1865)	1250	(1150-1405)
	5/4	4355	(4155-4805)	2350	(2150-2450)	1465	(1375-1600)
	6/4	4975 [-25]	(4585-5350)	2550	(2450-2815)	1715	(1550-1825)
	8/4	5520 [-100]	(5150-6045)	3100	(2925-3400)	2000	(1850-2110)
POPLAR	4/4	1425	(1325-1535)	810	(750-905)	495	(455-550)
	5/4	1530	(1450-1650)	870	(825-975)	600 [-25]	(555-640)
	6/4	1560	(1475-1675)	940	(890-1000)	700	(650-760)
	8/4	1600	(1470-1700)	960	(900-1040)	750	(675-800)
WALNUT	4/4	5315	(4780-5650)	3400 [-25]	(3200-3700)	2300	(2075-2425)
	5/4	5465 [+20]	(4975-5820)	3490	(3250-3700)	2400	(2100-2500)
	6/4	5635 [+50]	(5275-6175)	3800	(3530-4125)	2410	(2260-2600)
	8/4	5800	(5400-6375)	3990	(3715-4345)	2425	(2275-2675)

APPALACHIAN COMMENTS (Cont'd from Page 9)

falling, driving reductions to the listings for 6/4 #1C&Btr. The listing for 4/4 #1C is also reduced due to oversupply.

POPLAR: Drying operations are having no problems sourcing green Poplar, as plentiful log decks support seasonally higher production. Markets had been absorbing the additional output, despite concerns that production would eventually outpace demand and downward price pressures would emerge. That is the case this week, as lower reported prices necessitate reductions to the listings for 4/4 and 5/4 Fas&lf. Due to this imbalance, a yard contact said some of his supplying mills that recently finished sawing Poplar are putting the species on the back burner for a few weeks. Other mills are suspending production due to concerns about poor markets for #1C and #2A. Still, no other green listings change this week. Sellers are experiencing decent business for kiln dried Fas Poplar domestically and to Canada and Europe, with some buyers reportedly doubling purchases as production increased. Markets for #1C and #2A are slow, however, largely because Asian wood furniture manufacturers are struggling to move finished goods and are, therefore, controlling purchases. Observed prices for 5/4 #2A show downward movement that lowers the listings and ranges, but all other published figures stand pat.

WALNUT: Several concentration yards have filled up on green Walnut and are lowering their purchase prices,

purchase volumes, or both. Most listings are reduced this week following reductions to all the listings last week. Kiln dried Walnut business is decent overall, though not across all items. Specialty sorts are drawing more interest than more generic stock. The listings for 4/4 #1C are lowered, whereas all the 5/4 and 6/4 Fas figures are raised along with the high-end ranges for 8/4 Fas.

FRAMESTOCK, CANTS, TIES, & BOARD ROAD:

Southern region contacts report rising demand and higher prices for Oak and Mixed Species framestock, because the combination of tariffs and disruptions to ocean carrier networks is making procurement of alternative products more costly and time consuming. This change is not evident in the Appalachian region, however. Proximity to domestic furniture plants typically favors Southern sawmills. Reported Appalachian framestock prices remain intact.

Supplies of pallet cants are adequately meeting the market's needs and have been for several months. Prices are well represented by the listing and range.

Demand for 7x9 crossties is unchanged, with quotas by treating operations remaining in place. No changes are required to the range in either producing region.

Relatively few Appalachian sawmills are actively participating in the board road market. In limited trading, prices are consistent with the listing and range.

ASH					SOFT MAPLE - SAP&BTR				
	FAS	#1C	#2A		FAS	#1C	#2A		
4/4	1280	645	360		4/4	1975	925	395	
5/4	1350	695	395		5/4	2015	965	440	
6/4	1515	780	430		6/4	2030	1010	470	
8/4	1590	820	445		8/4	2110	1050	490	
ASPEN					SOFT MAPLE - UNSELECTED				
	FAS	#1C	#2A	#2B	FAS	#1C	#2A	#2B	
4/4	865	535	340	250	4/4	1830	835	350	275
BASSWOOD					5/4	1860	855	385	285
	FAS	#1C	#2A	#2B	6/4	1885	910	420	290
4/4	710	365	220	180	8/4	1945	950	445	295
5/4	770	390	230	190	FAS&SEL ALONE ADD \$0				
6/4	840	415	240	200	RED OAK				
8/4	865	450	250	205		FAS	#1C	#2A	#3A
9/4	865	460	255	---	4/4	1275 [+10]	855	500	410
BEECH					5/4	1295 [+10]	855	510	415
	FAS	#1C	#2A	#3A	6/4	1340 [+10]	865	555	455
4/4	730	475	330	265	8/4	1435 [+10]	895	---	---
5/4	815	565	380	305	FAS&SEL ALONE #2A ALONE				
6/4	835	635	415	345	4/4 & 5/4 ADD	\$0		4/4	\$505
8/4	855	650	420	345	6/4 & 8/4 ADD	\$0			
FAS&1F ALONE ADD \$0					WHITE OAK				
BIRCH						FAS	#1C	#2A	#3A
	FAS	#1C	#2A	#3A	4/4	2500	1000	515	415
4/4	1100	600	350	290	5/4	2720	1125	525	435
5/4	1225	675	410	305	6/4	2930	1195	---	---
6/4	1275	780	420	315	FAS&SEL ALONE				
8/4	1345	820	440	330	4/4, 5/4, & 6/4 ADD \$0				
Red Birch add\$305					SEL PRICES \$20/M LESS THAN FAS				
Sap Birch add\$140					CANTS - GREEN				
FAS&SEL ALONE ADD \$0					515 (475-550)				
NORTHERN SOFT GREY ELM					PALLET LBR - GREEN				
	FAS	#1C	#2A	#2B	4/4 x RW	300	(270-370)		
4/4	670	400	280	255	5/4 x RW	305	(270-375)		
HARD MAPLE - #1&2 WHITE					6/4 x RW	420	(365-470)		
	FAS	#1C	#2A		4/4 x SW	395	(355-440)		
4/4	1815	1110	735		5/4 x SW	425	(375-465)		
5/4	1975	1180	---		6/4 x SW	475	(435-535)		
6/4	2045	1190	---		TIES - 7x9 - GREEN				
8/4	2125	1210	---		NORTHERN - 8½'				
HARD MAPLE - UNSELECTED					CROSSTIES (32.00-36.00) Per Pc.				
	FAS	#1C	#2A	#3A	BOARD ROAD - GREEN				
4/4	1715	1005	525	445	485 (420-570)				
5/4	1865	1035	540	450					
6/4	1915	1060	575	450					
8/4	1985	1090	600	---					
Sap 1-Face in cuttings Add\$100									
FAS&SEL ALONE ADD \$0									

F. O. B. MILLS - NORTHERN AREA - Estimate of FOB Northern mill point average market prices for well manufactured Northern hardwoods in truckload and greater quantities. Stocks are random widths and lengths, green, rough, and graded in accordance with NHLA rules. Prices in US dollars per M'. Prices published in **Hardwood Market Report** are presented only as a guide. See statement on back page.

Prices in this matrix are for kiln dried lumber **measured before kiln drying**. The first figure listed for each grade and thickness is the predominant index price; figures in parentheses are the prevailing range of index prices. Bold figures indicate change. Prices published in **Hardwood Market Report** are presented only as a guide. See statement on back page. © 2026 *Hardwood Market Report*

		FAS		#1 Common		#2A Common	
ASH	4/4	1820	(1670-2005)	1270 [+20]	(1160-1375)	850	(745-910)
ASPEN	4/4	1355 [+10]	(1260-1395)	865 [+25]	(790-915)	490 [+10]	(465-560)
BASSWOOD	4/4	1260	(1210-1350)	735	(660-825)	505	(465-560)
	5/4	1365	(1305-1465)	760	(700-830)	535	(485-560)
	8/4	1480	(1420-1575)	930	(875-1050)	650	(595-700)
	9/4	1490	(1420-1575)	930	(875-1050)	670	(635-710)
YELLOW BIRCH	4/4	1500 [+30]	(1350-1630)	885	(800-985)	585	(465-630)
HARD MAPLE	4/4	2250 [+15]	(2145-2465)	1535 [+15]	(1400-1585)	1120	(980-1210)
#1&2 White	5/4	2590	(2470-2725)	1540 [+15]	(1440-1620)	---	-----
	6/4	2740	(2565-2840)	1570	(1455-1665)	---	-----
	8/4	3120	(2885-3255)	1640	(1535-1755)	---	-----
HARD MAPLE	4/4	2125 [+15]	(1980-2265)	1370 [+10]	(1265-1460)	915	(800-1005)
Unselected	5/4	2430	(2295-2515)	1395 [+10]	(1305-1495)	945	(830-1005)
SOFT MAPLE	4/4	2605	(2460-2780)	1300	(1190-1370)	670	(625-755)
Sap&Btr	5/4	2710	(2615-2885)	1350	(1255-1470)	760	(690-830)
	6/4	2815	(2680-3000)	1420	(1360-1535)	875	(805-945)
	8/4	2980	(2840-3130)	1520	(1435-1620)	955	(885-1030)
SOFT MAPLE	4/4	2440	(2295-2630)	1170	(1085-1220)	535	(500-580)
Unselected							
RED OAK	4/4	1740	(1625-1885)	1290	(1210-1395)	895	(835-955)
	5/4	1865	(1745-2055)	1305	(1235-1385)	895	(835-955)
	6/4	2255	(2145-2415)	1430	(1360-1480)	---	-----
WHITE OAK	4/4	3540	(3170-3915)	1830	(1670-2005)	1210	(1165-1295)

Comments

Hardwood sawmill production in the Northern region was down by 3.5% month over month in April, according to HMR/Fastmarkets estimates. This is a mild decline compared with the estimated 7.0% drop in the Appalachian region and 8.8% drop in the Southern region. Total production across the three regions fell by 6.8% to an annualized pace of 4.080 billion board feet, 8% lower than during the first four months of 2025.

Mud season in the Upper Midwest, which is now pretty much over, helped create a bit of seasonal supply tightness

in the North, providing upward pressure to prices in the region, particularly Hard Maple.

Otherwise, freight is still a disaster for everyone in the market (outside of the truckers). Higher rates are universal, and some sellers are struggling more than others with truck and container availability. These factors will continue to hamper the market as long as oil prices remain sharply above pre-war levels.

(Continued on Page 14)

NORTHERN COMMENTS (Cont'd from Page 13)

ASH: “The supply of Ash logs is really falling,” said a Wisconsin sawmill owner last week, echoing similar comments from contacts throughout the Northern and Appalachian regions. While this is an ongoing issue resulting primarily from the spread of Emerald Ash Borer, reports suggest the contraction in supplies of healthy Ash timber has accelerated of late. At the same time, overseas demand for Ash has not contracted much, if at all, particularly Chinese demand for the common grades. Inventories of kiln dried #1C and #2A are thinning out, causing prices to firm on new orders. For now, only the 4/4 #1C listings and top sides of the ranges increase. Last week’s bumps to 4/4 through 8/4 #1C&Btr have all the green listings in order.

ASPEN: The listings and several range figures for kiln dried 4/4 #2A&Btr Aspen are raised this week on higher reported prices. Contacts largely attribute price gains to lack of supply, although demand for kiln dried #1C&Btr has also shown modest growth of late. Few sawmills are processing this species compared to past norms. One green sawmill operator in Canada identified Aspen as his bestselling species, moving better than Hard Maple. Green prices notched substantial gains in the first three months of this year but have barely budged since. No changes are warranted to the listings this week.

BIRCH: This species has not been performing well for some time. Sawmills in the Upper Midwest have reduced Birch production to align supply with demand. Mills in the northeastern US and eastern Canada have been less successful in lowering output due to Birch’s prevalence in those areas. Some items are selling better than others, including the upper grades, which are in higher demand than the commons. Kiln dried prices have been on a downward trajectory for months, yet information gathered over the last two weeks shows Fas prices are bouncing off the bottom. The 4/4 Fas listings and ranges notch gains in this issue. The 4/4 #1C and #2A figures remain intact, as do all the green listings.

HARD MAPLE: Hard Maple has been the best-performing species in the Northern region over the past month-and-a-half. Prices have risen gradually over the period. An uptick in buying of winter-cut stock in March and April buoyed demand, while mud season in the Upper Midwest led to tightened supply, with some mills reportedly selling out of the species. #1C&Btr Hard Maple has been moving well to cabinet makers, according to contacts, while

some sellers have reported firm demand for #2A and #3A from the residential flooring sector. The kiln dried 4/4 Fas listings in both color classifications, along with the low ends of the #1&2 White ranges, rise further this week. The #1&2 White net tally price is up by \$90 over the past six weeks and is at a seven-month high. The kiln dried 4/4 and 5/4 #1C listings also advance, along with most corresponding range numbers.

SOFT MAPLE: Kiln dried Soft Maple prices in the Northern region have been static recently. Some contacts report better demand for Fas, both in brown and Sap&Btr, than for #1C and #2A, while others identify Sap&Btr #1C as the best-moving Soft Maple item. Broadly speaking, the market is near equilibrium, with Fas receiving slight upward pressure from the firm demand. Log supply tightness from mud season in the Upper Midwest is helping counter a moderate slowdown in overall demand compared with a few months ago. No changes to any listings, either green or kiln dried, are in order this week. Lower trading ranges are noted for kiln dried #1C in both color designations.

RED OAK: Sentiment in the Red Oak market remains more positive than negative in the Northern region. Kiln dried #1C&Btr stock is still moving well for export, particularly to China. One mill operator in Wisconsin told HMR/Fastmarkets that he’s never exported so much Red Oak and Ash lumber to China as recently and that prices from buyers in that country have been rising. Sellers report that the species is moving fine domestically, both green and kiln dried. And, reported prices have been edging up. Most contacts indicate that demand from the residential and truck trailer flooring sectors is “fair” or “slow.” Sellers of green #2&3A Red Oak are still waiting on the seasonal uptick in those sectors, though broad economic uncertainty might stymie that. Information received this week necessitates slight increases to the green Fas&Sel items across thicknesses. Prior adjustments have all other listings and ranges in order.

WHITE OAK: The White Oak market is still generally sluggish, though some producers believe a floor is in place. Since the start of 2025, the species has faced oversupply stemming from reduced consumption by the barrel stave sector. Price declines started slowing in late March, and since then, the market has been mostly steady. Recently, a mill operator in Iowa said that his customers have become more active rather than continuing to hold off on purchases, hoping for further declines. This indicates the

Prices in this matrix are for kiln dried lumber **measured after kiln drying** (“net tally”). The first figure listed for each grade and thickness is the predominant index price; figures in parentheses are the prevailing range of index prices. Bold figures indicate change. Prices published in **Hardwood Market Report** are presented only as a guide. See statement on back page. © 2026 *Hardwood Market Report*

If you would like to participate in HMR's pricing surveys, please contact michael.connolly@fastmarkets.com to get started. All information is kept confidential and is vital to accurate reporting.

		FAS (Net)		#1 Common (Net)		#2A Common (Net)	
ASH	4/4	1950	(1795-2150)	1360 [+20]	(1250-1475)	910	(800-975)
ASPEN	4/4	1455 [+15]	(1350-1500)	930 [+30]	(850-980)	525 [+10]	(500-600)
BASSWOOD	4/4	1350	(1300-1450)	790	(710-885)	545	(500-600)
	5/4	1465	(1400-1575)	815	(750-890)	575	(520-600)
	8/4	1590	(1520-1690)	1000	(940-1125)	700	(640-750)
	9/4	1600	(1520-1690)	1000	(940-1125)	720	(680-765)
YELLOW BIRCH	4/4	1610 [+30]	(1450-1750)	950	(860-1060)	630	(500-675)
HARD MAPLE <i>#1&2 White</i>	4/4	2415 [+15]	(2300-2650)	1645 [+15]	(1500-1700)	1200	(1050-1300)
	5/4	2775	(2650-2925)	1650 [+15]	(1550-1740)	---	-----
	6/4	2950	(2760-3060)	1685	(1560-1785)	---	-----
	8/4	3350	(3090-3490)	1760	(1650-1890)	---	-----
HARD MAPLE <i>Unselected</i>	4/4	2280 [+15]	(2125-2440)	1470 [+10]	(1360-1565)	980	(860-1080)
	5/4	2610	(2465-2705)	1500 [+10]	(1400-1605)	1015	(890-1080)
SOFT MAPLE <i>Sap&Btr</i>	4/4	2800	(2650-2985)	1400	(1275-1475)	720	(670-810)
	5/4	2910	(2800-3100)	1450	(1350-1580)	820	(740-895)
	6/4	3020	(2875-3220)	1525	(1460-1650)	940	(865-1015)
	8/4	3200	(3050-3360)	1635	(1545-1740)	1030	(950-1110)
SOFT MAPLE <i>Unselected</i>	4/4	2620	(2465-2825)	1260	(1165-1315)	575	(535-625)
RED OAK	4/4	1865	(1750-2030)	1385	(1300-1500)	960	(900-1025)
	5/4	2000	(1875-2200)	1400	(1325-1490)	960	(900-1025)
	6/4	2415	(2300-2585)	1535	(1460-1590)	---	-----
WHITE OAK	4/4	3815	(3415-4215)	1970	(1800-2150)	1300	(1250-1390)

market is stabilizing. From a demand perspective, comments about the species have been lukewarm; it's moving—both domestically and for export—but not for higher prices. Reported prices this week necessitate decreases to the high ends of the kiln dried 4/4 Fas ranges. All other listings and range remain at previous levels.

PALLET LUMBER, CANTS, TIES, & BOARD ROAD:

Pallet manufacturers in the Upper Midwest report steady sales of finished goods. Most are purchasing pallet cants and lumber on a replacement basis to maintain inventories. Last week's decreases have the pallet cant listing and range in order. The published figures for random- and select-

ed-width pallet lumber also stand pat.

Some Northern sawmills that consistently reported 7x9 crosstie prices in the past are no longer doing so because they do not have tie orders now. They are in the minority but do reflect the current contracted state of tie markets. Information both from mills that still have tie orders and also from treating operations shows little movement in prices this week, allowing the range to stand.

Board road business remains anemic for most Northern producers. Very few mills are participating in this market. No changes are warranted to the board road listing or range.

OAK STRIP FLOORING

Figures in the Appalachian and Southern area columns are estimates of manufacturers' **predominant** prices for unfinished Oak strip flooring; prices in the other column are estimates of **prevailing industry ranges** of manufacturers' prices. Variations in prices are due, in part, to differences in freight, the nature of markets, volumes ordered and shipped, etc. Prices are for truckload quantities graded in accordance with rules or comparable standards set forth by NOFMA. **Prices are in US Dollars per square foot (SF) and are net of dealer discount fees and commissions.** Figures in bold print signify price changes. Prices in **Hardwood Market Report** are presented only as a guide. See statement on back page.

If you would like to participate in HMR's pricing surveys, please contact tony.burbeck@fastmarkets.com to get started. All information is kept confidential and is vital to accurate reporting. © 2026 Hardwood Market Report

<u>3/4 x 2-1/4"</u>	<u>APPALACHIAN</u>	<u>SOUTHERN</u>	<u>PREVAILING RANGE</u>
SEL&BTR WHITE OAK	3.54 (-.04)	3.54 (-.04)	3.40-3.70 (-.03/NC)
SEL&BTR RED OAK	2.68	2.45	2.40-2.70 (NC/-05)
No. 1 COM WHITE OAK	2.05	2.02	1.90-2.12
No. 1 COM RED OAK	2.07	1.92	1.85-2.10 (-.03/-03)
No. 2 COM WHITE OAK	1.05	0.98	0.80-1.15 (-.05/NC)
No. 2 COM RED OAK	1.01	0.88	0.78-1.13 (-.05/NC)

<u>3/4 x 3-1/4"</u>	<u>APPALACHIAN</u>	<u>SOUTHERN</u>	<u>PREVAILING RANGE</u>
SEL&BTR WHITE OAK	3.55 (-.04)	3.55 (-.04)	3.33-3.70
SEL&BTR RED OAK	2.45	2.23 (+.03)	2.15-2.52
No. 1 COM WHITE OAK	2.45	2.28 (+.03)	2.19-2.50
No. 1 COM RED OAK	1.90 (-.03)	1.61	1.55-1.95 (NC/-05)
No. 2 COM WHITE OAK	1.40	1.10	1.01-1.46
No. 2 COM RED OAK	1.15	1.02 (+.02)	0.98-1.22

Contacts reported reduced flooring production in April compared to March, due partly to fewer production days in April, which included the Good Friday holiday.

April is typically a strong month for flooring shipments, but this April lagged expectations. Fast-rising diesel prices and reduced truck availability not only disrupted shipments but also dampened business sentiment coming off a good month in March. "At a time when the market should be taking off, it's just very flat," a manufacturer said.

Sel&Btr Red Oak flooring remains in solid demand, and contacts say inventories are decreasing in both widths. Margins for Sel&Btr Red Oak remain thin, however, as historically low sawmill production is, in many cases, preventing plants from lowering #2A&3A purchase prices and prompting them to raise prices to secure more #1C from core suppliers. No. 2Com Red Oak inventories are increasing at some plants, while No. 1Com inventories are steady across widths, prompting one contact to state, "It is good to have one grade that isn't a concern."

Sel&Btr White Oak is currently a big concern, for good

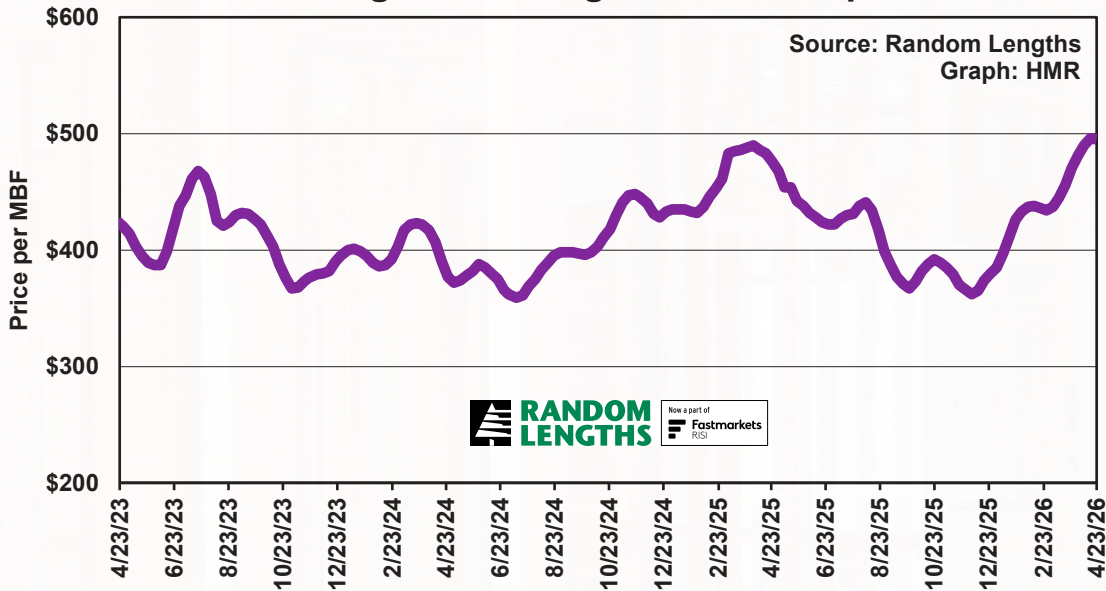
reason. Demand is low and inventories are rising. Ongoing price concessions are necessary to keep both widths moving in each region. Sel&Btr White Oak typically has a decent profit margin, helping producers offset potential losses for other grades and for other species. While concern is evident, it would be more prevalent if green 4/4 White Oak lumber prices were rising. They aren't, but they appear to be finding their floor following a long downward trend. Sel&Btr White Oak flooring and lumber prices falling in tandem helps maintain margins. Declining Sel&Btr flooring prices aren't ideal amid steady lumber prices, but that scenario is better for producers than falling Sel&Btr prices amid rising lumber prices. That divergence squeezes margins and adds more pressure to an already challenged industry.

Other price changes this week include reductions to most low-end ranges and some high-end ranges in the 2¼" width, along with decreases to the Appalachian listing and high end of the range for 3¼" No. 1Com Red Oak. Conversely, information raises the listings for Southern 3¼" Sel&Btr Red Oak, No. 2Com Red Oak, and No. 1Com White Oak.

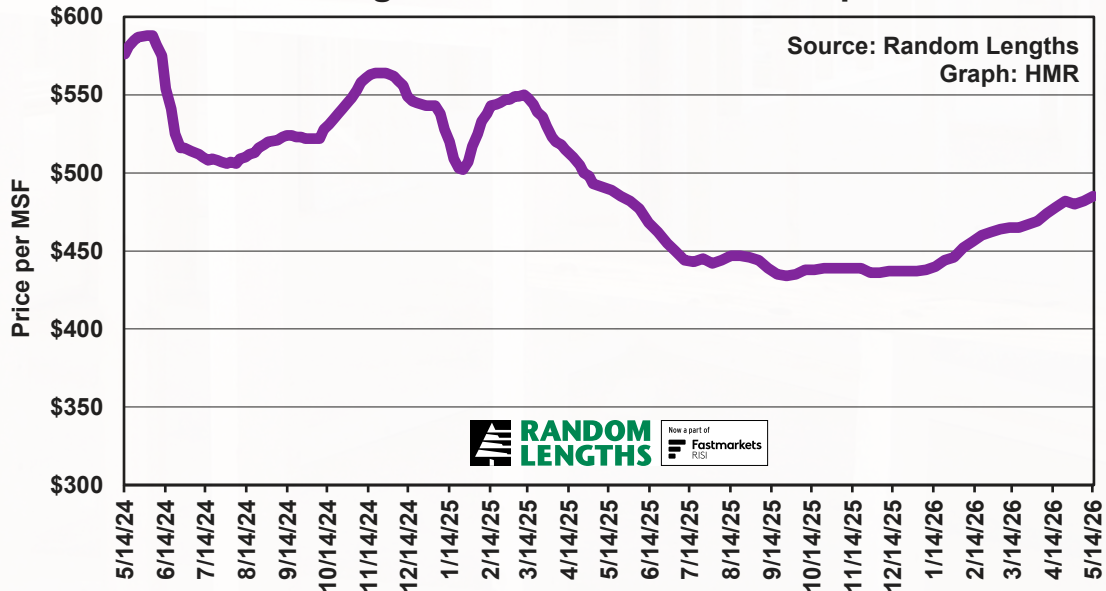


SPECIAL CONTENT

Random Lengths Framing Lumber Composite Prices



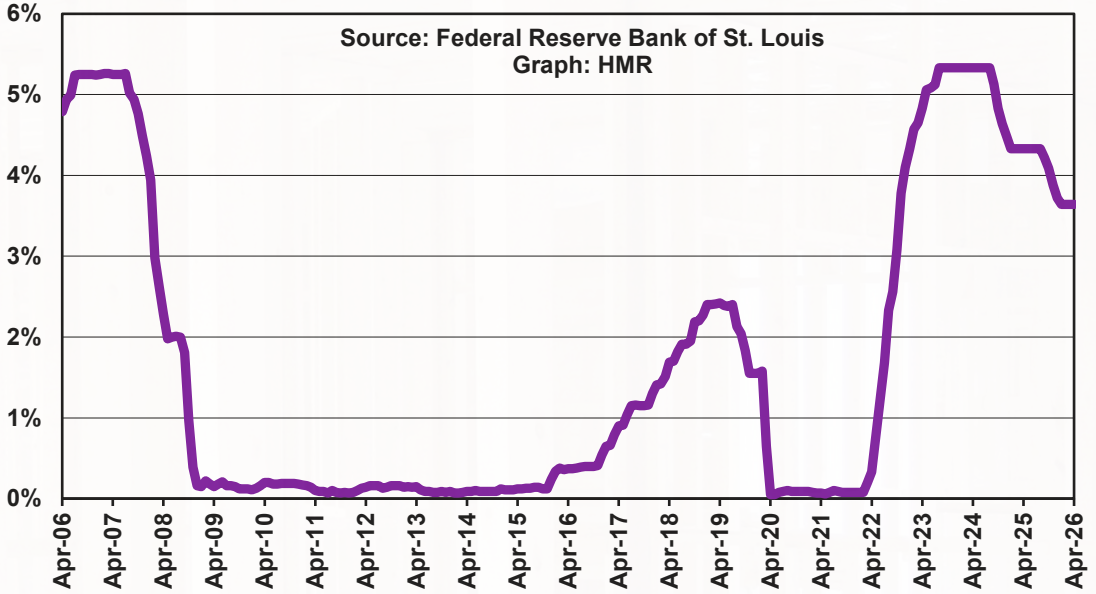
Random Lengths Structural Panel Composite Prices



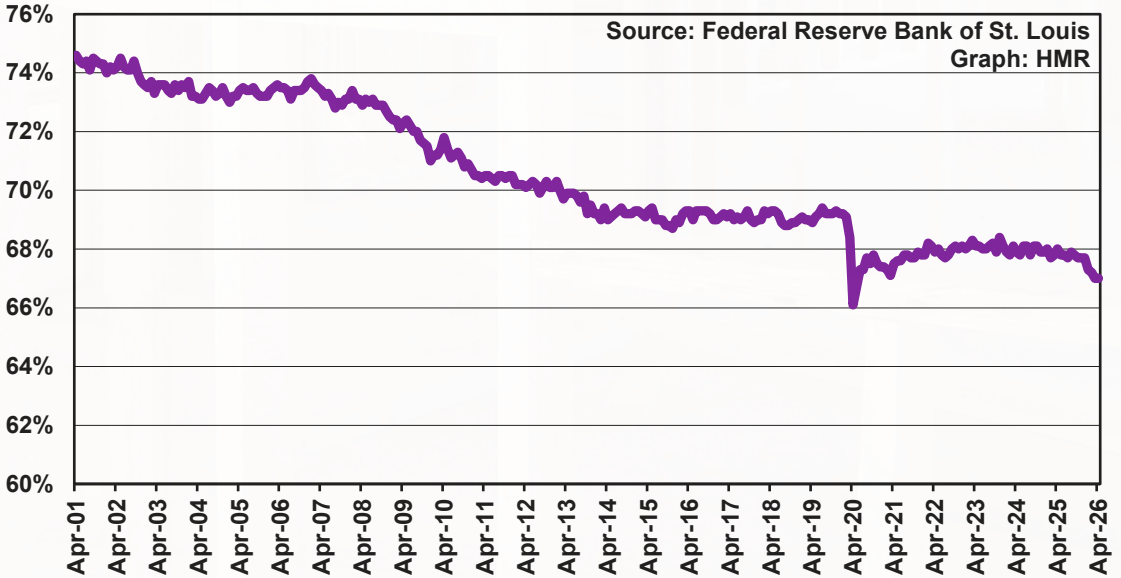


SPECIAL CONTENT

Federal Funds Rate (2006-2026)



Labor Force Participation Rate (US Men)





LUMBER COMPANY, INC.

*Growing, Sustainably Harvesting
and Manufacturing Hardwoods
the Pike Brand Way.*

May 2026

HARD MAPLE

12M'	4/4	FAS/Sel	#1&2Wh
10M'	4/4	FAS/Sel	Brown
10M'	4/4	#1 Com	S1F&Btr
4M'	4/4	#1 Com	Brown
12M'	4/4	#2 Com	S1F&Btr
2M'	4/4	#2 Com	Brown
12M'	5/4	FAS/Sel	#1&2Wh
7M'	5/4	Select	#1&2Wh 6'
12M'	5/4	#1 Com	S1F&Btr
5.5M'	5/4	#2 Com	S1F&Btr
12M'	6/4	FAS/Sel	#1&2Wh
12M'	8/4	FAS/Sel	#1&2Wh
2.2M'	8/4	FAS/Sel	S1F&Brown
3.5M'	8/4	#1 Com	S1F&Btr
12M'	10/4	FAS/Sel	#1&2Wh
1M'	10/4	#1 Com	Unsel
3M'	12/4	FAS/Sel	S1F&Brown
1M'	12/4	#1 Com	Unsel

SOFT MAPLE WHAD

15M'	4/4	FAS/Sel	6'-8'
8M'	4/4	#1 Com	
9.3M'	5/4	#1 Com	
2M'	5/4	#2 Com	
5M'	6/4	FAS/Sel	
3M'	6/4	Select	7'
2.4M'	6/4	#1 Com	
10M'	8/4	FAS/Sel	

CHERRY

8M'	4/4	FAS/Sel	Sap
4M'	4/4	FAS/Sel	90/70+Red
4.2M'	4/4	#1 Com	Unselected
5M'	5/4	FAS/Sel	90/70+Red
2.3M'	6/4	#1 Com	
5M'	8/4	FAS/Sel	Heavy Red
3M'	10/4	FAS/Sel	Heavy Red

ASH

5M'	4/4	FAS/Sel	
-----	-----	---------	--

BASSWOOD

15M'	4/4	FAS/Sel	
2.2M'	4/4	Select	7'
5M'	4/4	#1 Com	
6M'	4/4	#2 Com	
10M'	8/4	FAS/Sel	
1.5M'	8/4	#1 Com	

WALNUT

14M'	4/4	FAS1F&Btr	
14M'	5/4	FAS1F&Btr	
14M'	6/4	FAS1F&Btr	
14M'	8/4	FAS1F&Btr	
6.3M'	8/4	#2 Com	
3M'	10/4	FAS1F&Btr	
3M'	12/4	FAS1F&Btr	

WHITE OAK

12M'	4/4	FAS/Sel	7'-14'
12M'	4/4	Select	6'
12M'	4/4	#1 Com	
7M'	4/4	#2 Com	4'-5'
12M'	4/4	#2 Com	11'-12'
12M'	5/4	FAS/Sel	
12M'	5/4	Rustic	
12M'	6/4	FAS/Sel	

WHITE OAK - RIFT & QTRD

12M'	4/4	FAS/Sel	Qtrd
5M'	4/4	Select	7' Qtrd
6M'	4/4	Select	Rift 6'
12M'	5/4	FAS/Sel	Qtrd
2.5M'	5/4	Select	6' Qtrd
2.5M'	5/4	Select	6' Rift
24M'	5/4	#1 Com	Rift&Qtrd
11.6M'	5/4	#2 Com	Rift&Qtrd
5M'	6/4	FAS/Sel	Qtrd 7'-8'
3M'	6/4	FAS/Sel	Rift
5M'	6/4	Select	6' Rift
11M'	6/4	Select	7' Rift
2M'	8/4	Select	6' Rift
11M'	8/4	Select	7' Rift
3M'	8/4	#2 Com	Rift&Qtrd

RED OAK

12M'	4/4	FAS/Sel	
6.6M'	4/4	FAS/Sel	Mineral
5M'	4/4	FAS/1F	12"+
12M'	5/4	FAS/Sel	
10M'	5/4	FAS/Sel	Mineral
12M'	6/4	FAS/Sel	
6M'	7/4	FAS/Sel	
12M'	8/4	FAS/Sel	

RED OAK - RIFT & QTRD

12M'	4/4	FAS/Sel	Qtrd
6M'	5/4	FAS/Sel	Qtrd
3M'	5/4	#1 Com	R/Q
12M'	6/4	FAS/Sel	Qtrd
6M'	6/4	FAS/Sel	Rift
2M'	6/4	#1 Com	R/Q
6M'	8/4	FAS/Sel	Qtrd

POPLAR

12M'	4/4	FAS/Sel	R/Q
3M'	4/4	#2 Com	
3M'	5/4	FAS/Sel	R/Q
14M'	5/4	#1 Com	
2M'	5/4	#2 Com	
15M'	6/4	FAS/Sel	
6M'	6/4	FAS/Sel	R/Q
15M'	7/4	FAS/Sel	
6M'	8/4	FAS/Sel	R/Q
15M'	8/4	FAS/Sel	
2M'	8/4	#1 Com	
3M'	8/4	#2 Com	
15M'	10/4	FAS/Sel	
15M'	12/4	FAS/Sel	
2M'	16/4	FAS/Sel	
2M'	16/4	#2 Com	

HICKORY

12M'	5/4	FAS/Sel	
12M'	6/4	FAS/Sel	
2M'	6/4	Select	7'
6M'	8/4	FAS/Sel	

Contact us for current prices:

Marcus Banning: mbanning@pikelumber.com
 Angie Capper: acapper@pikelumber.com
 Faith Kamp: fkamp@pikelumber.com
 Cody Larimore: clarimore@pikelumber.com
 Ryan Mulligan: rmulligan@pikelumber.com

- 12179 E SR 114, Akron, IN 46910
- 1-800-356-4554 • Fax: 574-893-7400
- www.pikelumber.com





SELECT HARDWOODS

A Division of Church and Church Lumber Company

863 New Browns Ford Rd., Wilkesboro, NC 28697

260518

Species ID	Grade ID	Quantity	Species ID	Grade ID	Quantity	Species ID	Grade ID	Quantity
HIC	4/4 FAS Unselected	SOLD	RO	4/4 FAS	SOLD	WO	4/4 SEL/BTR Plain Sawm	2 T/L's
HIC	4/4 1Com Unselected	1,800'	RO	4/4 FAS 12" and wider	9,900'	WO	4/4 1Com Plain Sawm	3 T/L's
HIC	4/4 2Com Unselected	1,000'	RO	4/4 FAS 6"	8,000'	WO	4/4 2Com Plain Sawm	SOLD
HM	4/4 FAS White	SOLD	RO	4/4 FAS 7"	SOLD	WO	4/4 FAS Quartered RWL	3,300'
HM	4/4 1Com Brown	1 T/L	RO	4/4 1Com Plain Sawm	10,300'	WO	4/4 FAS Quartered 4"	4,000'
HM	4/4 2Com Brown	2,500'	RO	4/4 2Com Plain Sawm	7,466'	WO	4/4 FAS Quartered 5"	2 T/L's
POP	4/4 FAS 12" & Wider	SOLD	RO	4/4 Qtd Only FAS	SOLD	WO	4/4 FAS Quartered 6"	2 T/L's
POP	4/4 FAS	1 T/L	RO	4/4 Rift & Qtrd FAS	5,000'	WO	4/4 FAS Quartered 7"	12,400'
POP	4/4 1Com	2 T/L's	RO	4/4 Rift & Qtrd 1Com	1 T/L	WO	4/4 FAS Quartered 8"	SOLD
POP	4/4 2Com	13,000'	RO	4/4 Rift & Qtrd 2Com	6,000'	WO	4/4 FAS Quartered 9"	SOLD
POP	4/4 FAS White 3 Face	1 T/L	RO	4/4 RIFT ONLY FAS	1 T/L	WO	4/4 2Com Quartered	1 T/L
POP	4/4 FAS Stain	1 T/L	RO	4/4 RIFT ONLY 1Com	Inquire	WO	4/4 FAS Rift & Qtrd RWL	SOLD
White Pine Sorted Stock Widths	40,000'		RO	4/4 RIFT ONLY 2Com	Inquire	WO	4/4 1Com Rift & Qtrd	4 T/L's
						WO	4/4 SEL 4" Rift	1,800'
						WO	4/4 FAS 5" Rift	6,100'
						WO	4/4 SEL 6" Rift	707'
						WO	4/4 FAS 7" Rift	Inquire
						WO	4/4 FAS 8" Rift	Inquire
						WO	4/4 FAS 9" Rift	Inquire
						WO	4/4 1Com RIFT	4 T/L's
						WO	4/4 2Com RIFT	2 T/L's

We are putting up RIFT Red and White Oak!

S2S and SLR available.

Ask about our "MOULDER BLANKS"!

Van/Container Loading.

www.selecthardwoodslumber.com/

www.churchandchurchlumber.com



Quality First, Integrity Based

Domestic Sales: Josh Gowan 336-262-9696

josh.gowan@churchandchurchlumber.com

Export Sales: John Linn 336-566-8350

john.linn@churchhardwood.com

7029 Main St.
P. O. Box 105
FROHNA, MISSOURI 63748
USA

Email:

mark@eastperrylumber.com

markscholl@eastperrylumber.com



PHONE

573-824-5272

FAX

573-824-5275

Web Site:

www.eastperrylumber.com

FOR SALE • KILN DRIED

ASH

20M' 4/4 FAS/1F White
2M' 4/4 FAS/1F Brown
8M' 4/4 2 Com

CHERRY

5M' 4/4 FAS/1F
15M' 4/4 1 Com
4M' 4/4 2 Com

HARD MAPLE

20M' 4/4 FAS/1F White
8M' 4/4 FAS/1F Brown
10M' 4/4 1 Com White
24M' 4/4 1 Com Brown
50M' 4/4 2 Com

HICKORY

10M' 4/4 FAS/1F Calico
10M' 4/4 2B

POPLAR

15M' 4/4 FAS/1F
11" & Wider
100M' 4/4 FAS/1F
30M' 4/4 1 Com
20M' 5/4 FAS/1F
5M' 5/4 1 Com

POPLAR - Cont'd

14M' 6/4 FAS/1F
2M' 6/4 1 Com
20M' 8/4 FAS/1F
1M' 8/4 1 Com
3M' 8/4 2A Com

RED OAK • APPALACHIAN

20M' 4/4 FAS/1F
12M' 4/4 FAS/1F 7'
15M' 4/4 FAS/1F 11" & Wider
8M' 4/4 1 Com
5M' 5/4 FAS/1F
14M' 5/4 1 Com
6M' 5/4 2A Com
10M' 5/4 3A/2B Com
10M' 6/4 FAS/1F
4M' 6/4 1 Com
3M' 6/4 2A Com
18M' 8/4 FAS/1F
2M' 8/4 1 Com
6M' 8/4 2A Com

RED OAK • OFF COLOR

25M' 5/4 FAS/1F
5M' 5/4 1 Com

RED OAK • OFF COLOR - Cont'd

5M' 6/4 FAS/1F
4M' 8/4 FAS/1F
1M' 8/4 1 Com

WALNUT Steamed

3M' 4/4 FAS/1F 6'
10M' 4/4 FAS/1F 8', 30%
9" & Wider

8M' 4/4 FAS/1F 14'
3M' 4/4 FAS/1F 16'
5M' 4/4 1 Com
3M' 8/4 FAS/1F

WHITE OAK

10M' 4/4 1 Com

WHITE OAK • OFF COLOR

40M' 4/4 FAS/1F
30M' 4/4 1 Com

TIMBERS AND TIES

7x9 8'-16'

CRIBBING

6X6

TRAILER FLOOR

REPLACEMENT
2x8 8'-16' White Oak

KINDLING &

FIREWOOD LUMBER
Green and Kiln Dried

LIVE EDGE SLABS KD

2" Walnut

PALLET CANTS

50M' 8'-16'

BLOCKING

2x4 8'-16'
3x4 8'-12'

- ATFS CERTIFIED FORESTS
- SURFACING FINISHED OR HIT & MISS
- STRAIGHT-LINE RIPPING
- EXPORT PREPARATION
- CONTAINER LOADING
- MIXED TRUCKLOADS
- ALL LUMBER IS CHEMICAL FREE



WEEKLY SPECIAL
10M' 4/4 FAS/1F
RED OAK
KD 7'
\$1,740/M'

USED EQUIPMENT
FOR SALE

Complete
Corley 10 Saw
Trimmer Line
with Unscrambler

Missouri Walnut Group, LLC



Proud
American
Family Owned



The US Largest Hardwood Concentration Yard

- 3 Hurst 600HP Boilers
- 7 Million BF Kiln Capacity
- 1000' Long Lumber Handling Line
- 100 Bin Sorters

YOUR TRUSTED WALNUT AND WHITE OAK EXPERT

WHITE OAK RIFT & QUARTER

4/4	Rift fas:	27M'
5/4	Rift fas:	18M'
8/4	Rift fas:	6M'
4/4	Quarter fas:	20M'
5/4	Quarter fas:	12M'
8/4	Quarter fas:	4M'

1Com RQ, 2Com RQ Available

WALNUT

4/4	Max (90/70) S2S:	24M'
4/4	High Heart (90/50) S2S:	28M'
4/4	Superior (90/70) Rough:	23M'
5/4	Superior (90/70) Rough:	14M'
6/4	Superior:	20M'
8/4	Superior:	32M'
10/4	Superior:	35M'
12/4	Superior:	30M'

– OPEN POSITION –

Looking For An Experienced Kiln Manager/Operator

HR Email:

sstafford@missouriwalnutgroup.com

Domestic Sales

Steve Arnold (Sales Manager)
417-389-6141
sarnold@missouriwalnutgroup.com

Export Sales

William Qian (Global Manager)
417-592-5420
wqian@missouriwalnutgroup.com
Office 417-455-0792

HIGH QUALITY GREEN WALNUT AND WHITE OAK LUMBER WANTED

Kirk Bachman (Procurement Manager)
937-418-1490

www.missouriwalnutgroup.com

Tioga

Hardwoods, Inc.

Berkshire, NY 13736

Ph: 607-657-8686 - Fax: 607-657-2532

ASH

14M' 4/4 Rustic

14M' 5/4 Rustic

BASSWOOD

4.5M' 5/4 FAS/SEL 11-12'

Y BIRCH

3.5M' 4/4 FAS/SEL Sap&Btr

CHERRY

5M' 4/4 PRM-W 9"+ W 90/50 + Red

HARD MAPLE

13M' 4/4 FAS/SEL 1+2 White

2M' 4/4 FAS/SEL 5-5.49 1+2 White

2M' 4/4 FAS/SEL 6" 6-6.49"1+2 White

2M' 4/4 PRM-W 9.5"+, 11" Avg

10M' 4/4 FAS/SEL Brown

36M' 4/4 1C Sap&Btr

9M' 4/4 1C Brown

36M' 4/4 2AC Sap&Btr

Y POPLAR

16M' 4/4 FAS/F1F

20M' 4/4 2C

SOFT MAPLE

3.5M' 4/4 SEL Sap + 2.65"R2E

15M' 4/4 SEL 7' Sap&Btr 15/16"

15M' 4/4 1C Brown 15/16"

15M' 4/4 1C&Btr Curly

32M' 4/4 2AC Sap&Btr

30M' 4/4 2AC Brown 15/16"

15M' 4/4 1C&Btr Wormy

14M' 5/4 FAS/SEL Sap & Btr 2 Wks

7M' 5/4 1C&Btr Ambrosia

7M' 5/4 1C&Btr Wormy

4M' 5/4 1C&Btr Curly

20M' 8/4 FAS/SEL Sap&Btr

4M' 8/4 1C Sap&Btr

3M' 8/4 1C&Btr Curly

28M' 8/4 1C&Btr Wormy

WHITE OAK

12M' 4/4 1C

10M' 4/4 Rustic 9"+Wider 11.3" Avg

MIXED

28M' 4/4 Frame KD 15/16" or Rough

Custom Rip to Width options
Available upon request.

www.tiogahardwoods.com



Paint Lick Hardwoods

Sawing Fresh, High Quality
Grade Hardwood Lumber
RO, WO, POP, ASH, HIC,
HM, SM, CH, WAL, & more.
For your green lumber
needs, contact us today!

Jason Dishman

Lumber Sales

(606) 340-6243

paintlick.jason@outlook.com
690 Doty Lane, Paint Lick, KY 40461



Sawing Fresh, High Quality
Grade Hardwood Lumber
RO, WO, POP, ASH, HIC, HM,
SM, CH, WAL, R/Q & more.
For your green lumber
needs, contact us today!

Sales: **Bobby Atkinson**
(606) 396-1011

Eagle.bobby@outlook.com



G. F. HARDWOODS, INC.

"A Company You Can Depend On"

9880 Clay County Hwy.
MOSS, TN 38575-9724
PH 1-800-844-3944
FAX 931-258-3517



Sales
Quentin Moss
Trevor Graves

1 T/L 4/4 1F+ Hard Maple White	3 WEEKS	1 T/L 4/4 1C Red Oak	1 WEEK
1 T/L 4/4 1F+ Poplar	PROMPT	1 T/L 4/4 2C Red Oak	1 WEEK
1 T/L 4/4 1C Poplar	PROMPT	2 T/L's 4/4 3A Red Oak	PROMPT
1 T/L 5/4 1F+ Poplar	2 WEEKS	1 T/L 4/4 1F+ Soft Maple Unsel	3 WEEKS
1 T/L 6/4 1F+ Poplar	2 WEEKS	1 T/L 4/4 1F+ White Oak	2 WEEKS
1 T/L 6/4 1C Poplar	2 WEEKS	1 T/L 6/4 1F+ White Oak Heavy 10'	PROMPT
1 T/L 4/4 1F+ Red Oak	1 WEEK		

All Material is KD - Rough



Brenneman Lumber Company

51 Parrott Street Ext., P.O. Box 951
Mount Vernon, OH 43050
Contact: Charlie Brenneman,
Doug Brenneman Jr.
Telephone: 740-397-0573 • Fax: 740-392-9498

KD Lumber

Ash

4/4, 6/4 & 8/4 FAS/Sel

4/4 1C

5/4 2AC

Cherry

4/4, 5/4, 6/4 & 8/4

FAS/Sel 90/50 Red

4/4 FAS/Sel Sappy

Hard Maple

4/4 FAS/Sel 1&2W

Hard Maple cont'd

4/4 2AC 1&2W

4/4 1C&Btr Brown

5/4 1C 1&2W

5/4 1C&Btr Brown

5/4 2AC 1&2W

Hickory

4/4 2AC

5/4 1C

5/4 2AC

5/4 Rustic

Poplar

5/4 1C

Red Oak

4/4, 5/4 & 7/4 FAB

5/4 1C

Soft Maple

4/4, 5/4 & 6/4 2AC

4/4 & 6/4 1C&Btr WHND

5/4 1C

6/4, 8/4 FAS/Sel

8/4 1C

White Oak

4/4, 5/4, 6/4 & 8/4

FAS/Sel

4/4 & 5/4 1C

5/4 RUSTIC

4/4 & 5/4 QTRD

SUBSCRIBE NOW! VISIT: HMR.COM



Paul
pauc@cramerlumber.com

Ruth
ruthc@cramerlumber.com

Mark
markv@cramerlumber.com

Michael
michaelc@cramerlumber.com

W.M. Cramer Lumber Co.

PHONE (828) 397-7481

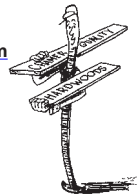
FAX (828) 397-3763

www.cramerlumber.com



P. O. Box 2888

Hickory, NC 28603



AFR & GEN. MAHOG

4/4 thru 12/4 1FB

ALDER

4/4 thru 8/4
 Sup, Cab, Knotty

ANDIROBA

245' 5/4 #2C

AROMATIC

RED CEDAR

33M' 4/4 2CB

ASH RWL

10M' 4/4 SLB

7M' 4/4 #1C

3M' 4/4 #2C

1M' 5/4 SLB

3M' 5/4 #1C

11M' 5/4 #2C

3M' 6/4 SLB

2M' 6/4 #2C

17M' 8/4 SLB

8M' 8/4 #1C

64' 10/4 SLB

3M' 12/4 SLB

BASSWOOD

22M' 4/4 SLB

4M' 4/4 #1C

4M' 4/4 #2C

800' 4/4 FS

3M' 5/4 SLB

6M' 5/4 #1C

15M' 5/4 #2C

300' 6/4 SLB

5M' 10/4 SLB

5M' 16/4 SLB

BIRCH

1M' 4/4 SLB

6M' 4/4 SLB Sap

5M' 4/4 #1C

9M' 4/4 #2C

500' 5/4 SLB

2M' 6/4 #1C

CHERRY PA/NY

4M' 4/4 SLB 10"+red

2M' 4/4 SLB 90/50

4M' 4/4 SLB 90/90

3M' 5/4 SLB 90/90

4M' 6/4 SLB 90/90

2M' 8/4 SLB 90/90

400' 8/4 #2C

900' 10/4 SLB

2M' 16/4 SLB

SPANISH CEDAR

4/4 thru 12/4 1FB

CYPRESS

10M' 1x6 Sel

13M' 1x8 Sel

CYPRESS cont'd

9M' 1x6 #2C

800' 1x10 #2C

1M' 1x10 Sel

2M' 1x12 Sel

1M' 1x12 #2C

Odds & Ins - 5/4, 6/4

TGVJ, Pat 105

5M' 2x6 Sel

9M' 2x6 #2C

1M' 2x8 Sel

1M' 2x8 #2C

2M' 2x12 Sel

386' 24x4 Pecky

EURO BEECH

1M' 4/4 Sup

2M' 5/4 Sup

5M' 5/4 Bend

4M' 8/4 Sup

1M' 10/4 Sup

1M' 12/4 Sup

HARD MAPLE

4M' 4/4 SLB White

3M' 4/4 #1C Brown

9M' 5/4 SLB White

1M' 5/4 #1C

1M' 5/4 #2C

11M' 6/4 SLB White

4M' 6/4 #1C White

17'L 8/4 SLB

6M' 8/4 SLB White

600M' 8/4 #1C White

4M' 8/4 #2C

3M' 10/4 SLB

1M' 10/4 #1C

2M' 12/4 SLB

HICKORY

4M' 4/4 1FB

2M' 4/4 1FB Calico

5M' 4/4 #1C

5M' 4/4 #2C

9M' 5/4 1FB

2M' 6/4 1FB

1M' 7/4 1FB

4M' 8/4 1FB

MERANTI

600' 4/4 SLB

600' 6/4 SLB

SPY

900' 1x8 Saps

3M' 5/4x6"+8" Prime

1M' 2x8' Prime

1M' 2x12 Prime

POPLAR

500' 1x5 1FB

1 T/L 4/4 1FB

4M' 4/4 #1C

POPLAR cont'd

14M' 4/4 #2A

20M' 5/4 1FB

1M' 5/4 #1C

3M' 5/4 #2C

26M' 6/4 1FB

6M' 6/4 #1C

20M' 8/4 1FB

3M' 8/4 #1C

700' 8/4 #2C

6M' 10/4 1FB

4M' 10/4 #1C

4M' 10/4 #2C

3M' 12/4 1FB

3M' 12/4 #1C

2M' 12/4 #2C

1M' 16/4 1FB

RED OAK Appal

12M' 4/4 1FB

700' 4/4 Sel 6'

22M' 4/4 #1C

4M' 5/4 1FB

2M' 5/4 #3C

10M' 6/4 1FB

1M' 6/4 #2C

13M' 8/4 1FB

6M' 10/4 1FB

2M' 12/4 1FB

RUSTIC WHITE OAK

9M' 4/4 8"+

7M' 4/4 RQ

2M' 5/4 RWL

4M' 6/4 RWL

6M' 8/4 RWL

SOFT MAPLE

12M' 4/4 SLB Brown

2M' 4/4 SLB

8M' 4/4 #1C

10M' 4/4 #1C Brown

10M' 4/4 #2C

18M' 5/4 SLB

1,300' 5/4 SLB Brown

13M' 5/4 #1C

5M' 6/4 SLB

7M' 6/4 #1C

26M' 8/4 SLB

13M' 8/4 #1C

26M' 8/4 #2C

17M' 12/4 SLB

2M' 12/4 #1C

1M' 12/4 #2C

WALNUT

7M' 4/4 1FB

8M' 4/4 1FB 8"+

5M' 4/4 SUP

7M' 4/4 1FB 90/70

Oak Rules

WALNUT cont'd

3M' 4/4 Sel 6'

7M' 4/4 #1C

9M' 4/4 #2C

2M' 4/4 Rustic 6"-7"

2M' 5/4 1FB

4M' 5/4 SUP

2M' 5/4 #1C

6M' 6/4 1FB

7M' 6/4 SUP

10M' 8/4 1FB

6M' 8/4 SUP

1200' 8/4 #2C

1M' 10/4 1FB

6M' 10/4 SUP

3M' 12/4 1FB

WHITE PINE

11M' 1x8 FG

20M' 4/4 FG

27M' 5/4 FG

20M' 6/4 FG

18M' 8/4 FG

2M' 12/4 FG

2M' 5/4 Clear

4M' 6/4 Clear

WHITE OAK

5M' 4/4 1FB

7M' 4/4 #2C

6M' 5/4 1FB

4M' 6/4 1FB

16M' 8/4 1FB

3M' 10/4 1FB

2M' 12/4 1FB

WHITE SM PA/NY

1 T/L 4/4 SLB

3M' 4/4 #1C

5M' 4/4 #2C

5M' 5/4 SLB

5M' 5/4 SLB

5M' 5/4 #1C

6M' 6/4 SLB

1M' 6/4 #1C

8M' 8/4 SLB

2M' 8/4 #2C

1M' 10/4 SLB

500' 12/4 SLB

WHND SOFT MAPLE

20M' 4/4 1CB

5 T/L 5/4 1CB

7M' 6/4 1CB

28M' 8/4 1CB

8M' 10/4 1CB

12M' 12/4 1CB

SAPELE 1FB

4/4, 5/4, 6/4, 8/4 PS

4/4, 5/4, 6/4, 8/4 Q

Limbo Says!

Learn To Identify

The Music Of
 Chopin, Mozart
 and Beethoven

AMBROSIA

Wormy Soft Maple

4/4, 5/4, 6/4,
 8/4 & 10/4, 12/4

386'

24/4

Pecky Cypress

QTR & RIFT

WHITE OAK S&B

2M' 4/4 QTR

10M' 4/4 RIFT

3M' 5/4 QTR

4M' 5/4 RIFT

4M' 6/4 QTR

500' 6/4 QTR 1C

3M' 6/4 RIFT

1M' 7/4 RIFT

5M' 8/4 QTR

4M' 8/4 RIFT

Holmes & Co.

127

years

in hardwood
industry.

Specializing in Thick Stock

T/Ls of these items
available for prompt
shipment



807 E Ellsworth, Columbia City, IN 46725

Phone: **260-244-6149**

Fax: **260-244-5649**

Email: holmeshipping47@gmail.com

WALNUT

4/4 Prime
4/4 FAS/FIF
5/4 FAS/FIF
6/4 FAS/FIF
8/4 FAS/FIF
10/4 FAS/FIF
12/4 FAS/FIF
16/4 FAS/FIF

HARD MAPLE

10/4 FAS/FIF
12/4 FAS/FIF
16/4 FAS/FIF

SOFT MAPLE

8/4 FAS/FIF
Whad & Whnd

WHITE OAK

4/4 FAS/FIF
4/4 1C
6/4 FAS/FIF
8/4 FAS/FIF
10/4 FAS/FIF
12/4 FAS/FIF
16/4 FAS/FIF

RED OAK

5/4 FAS/FIF
8/4 FAS/FIF
10/4 FAS/FIF
12/4 FAS/FIF
16/4 FAS/FIF

POPLAR

10/4 FAS/FIF
12/4 FAS/FIF
16/4 FAS/FIF

CHERRY

10/4 FAS/FIF
12/4 FAS/FIF
16/4 FAS/FIF

ASH

10/4 FAS/FIF

**Many more
items available.
Please call
with inquiries**

Import HMR Newsletter™

Now a part of

Fastmarkets

Increased shipping costs and delays related to the ongoing Middle Eastern conflict continue to dog the hardwood import sector. In the HMR *Import* Newsletter, published on May 15, Ben Stanley looks at the disruptions.



Request a sample copy today. Email client.services@fastmarkets.com



LUMBER COMPANY

BAND MILL / DRY KILNS / SURFACING / STRAIGHT LINE RIP

694 DD Highway
Fayette, MO 65248 U.S.A.
Phone: 660-248-3000

Specializing in **WALNUT**
and these additional Fine Hardwoods

Fax 660-248-2508

WALNUT - STEAMED

1,700' 3/4 FAS/1F	700' 5/4 FAS/1F 10"/Wider 13'/Longer	10,000' 8/4 2 Com
32,000' 4/4 FAS/1F	10,000' 5/4 FAS/1F 13"/Wider	1,800' 8/4 Live Edge
20,000' 4/4 FAS/1F 6'	5,000' 5/4 FAS/1F Figured	32,000' 10/4 FAS/1F
1,500' 4/4 FAS/1F 13'-L	4,000' 5/4 FAS/1F Rift/Qtrd	5,800' 10/4 FAS/1F 13'/Longer
6,000' 4/4 FAS/1F Veneer Prime	2,000' 5/4 1C/SEL	32,000' 10/4 FAS/1F 10"/Wider
16,000' 4/4 FAS/1F 10"/Wider	1,100' 5/4 Live Edge	7,500' 10/4 FAS/1F Figured
13,000' 4/4 FAS/1F 13"/Wider	32,000' 6/4 FAS/1F	3,900' 10/4 FAS/1F Rift/Qtrd
5,000' 4/4 FAS/1F Figured	9,000' 6/4 FAS/1F 6'	3,400' 10/4 COMSEL
7,000' 4/4 FAS/1F Rift/Qtrd	5,200' 6/4 FAS/1F 13'/Longer	13,000' 12/4 FAS/1F
1,600' 4/4 Clears 7'-12'	16,000' 6/4 FAS/1F 10"/Wider	3,900' 12/4 FAS/1F 10"/Wider
16,000' 4/4 1C/Sel RWL	10,000' 6/4 FAS/1F 13"/Wider	400' 12/4 FAS/1F Figured
6,000' 4/4 2 Com	6,000' 6/4 FAS/1F Figured	875' 12/4 COMSEL
2,000' 4/4 Rustic	16,000' 6/4 FAS/1F Rift/Qtrd	610' 12/4 2 Com
5,400' 4/4 Framestock	16,000' 8/4 FAS/1F	3,000' 16/4 FAS/1F
900' 4/4 Live Edge	2,800' 8/4 FAS/1F 6'	2,300' 16/4 FAS/1F 10"/Wider
32,000' 5/4 FAS/1F	5,600' 8/4 FAS/1F 13'/Longer	290' 16/4 COMSEL
16,000' 5/4 FAS/1F 6'	8,000' 8/4 FAS/1F 10"/Wider	
5,300' 5/4 FAS/1F 13'/Longer	12,000' 8/4 FAS/1F 13"/Wider	
6,000' 5/4 FAS/1F Veneer Prime	3,000' 8/4 FAS/1F Figured	
16,000' 5/4 FAS/1F 10"/Wider	16,000' 8/4 FAS/1F Rift/Qtrd	

SILVERLEAF SOFT MAPLE

13,000' 4/4 Sel&Btr
10,000' 4/4 1 Com
6,000' 4/4 2 Com
6,400' 4/4 Framestock
6,300' 4/4 Sel&Btr
2,000' 5/4 Sel&Btr Figured
6,000' 5/4 1 Com
18,000' 5/4 2 Com
2,100' 5/4 Framestock
3,000' 6/4 Sel&Btr
400' 6/4 Sel&Btr Figured
1,500' 8/4 Sel&Btr
1,400' 8/4 1 Com
16,000' 8/4 2 Com

SILVERLEAF SOFT MAPLE Cont'd

4,700' 8/4 Framestock
1,700' 10/4 Sel&Btr
1,500' 10/4 Sel&Btr Figured
2,000' 10/4 2 Com
2,000' 12/4 Sel&Btr
1,500' 12/4 Sel&Btr Figured
MAY16/4 Sel&Btr

RED OAK

5,500' 4/4 Prime
950' 4/4 FAS/1F 10"/Wider C1F
400' 4/4 FAS/1F 12"/Wider
1,250' 4/4 Sel&Btr Rift/Qtrd
950' 4/4 Framestock

WHITE OAK

12,000' 4/4 PRIME
1,900' 4/4 FAS/1F 10"/Wider C1F
9,200' 4/4 1 Com
4,550' 4/4 2 Com
1,300' 4/4 Framestock

AROMATIC CEDAR

26,000' 4/4 1C/Btr
100' 5/4 1C/Btr
2,000' 6/4 1C/Btr
6,000' 8/4 1C/Btr



Please Call 660-248-3000 or E-Mail:
Tony Pescaglia – TONYP@MOPACLUMBER.COM

Visit www.mopaclumber.com for our complete inventory

Penn-Sylvan

P.O. Box 111
Spartansburg, PA 16434
www.penn-sylvan.com

ASH

1 T/L 3/4 6" RUSTIC

BEECH

1 T/L 4/4 PRIME

1 T/L 4/4 COMSEL

Y. BIRCH

1 T/L 4/4 PRIME UNS

1 T/L 4/4 COMSEL UNS

HICKORY

1 T/L 3/4 PRIME

1 T/L 3/4 COMSEL

HARD MAPLE

1 T/L 4/4 PRIME

2 T/L 4/4 2A SAP

POPLAR

1 T/L 3/4 2A

1 T/L 4/4 PRIME LONG 15-16'

2 T/L 4/4 PRIME 8-16'

1 T/L 4/4 COMSEL 30 DAYS

10,000' 6/4 PRIME 10'

1 T/L 8/4 PRIME 30 DAYS

RED OAK

2 T/L 8/4 PRIME

SYCAMORE

1 T/L 4/4 PRIME

Andrew Robinson
andrew.robinson@penn-sylvan.com
416-606-4641

Marty James
marty@penn-sylvan.com
814-694-2311

Jay Reese
j.reese@penn-sylvan.com
814-758-3333



Marathon, WI
menznerhardwoods.com

SELLING!

Hard Maple

5/4 S&B 1&2 White 7-8' – 2 T/L
6/4 S&B 1&2 White 9-10' – 2 T/L

Contact: Nick Bunkelman
nickb@menznerhardwoods.com
Ph: 715-443-1318



Roy Anderson
LUMBER COMPANY

4/4 White Oak PRIME
4/4 White Oak 6' Select
4/4 White Oak #1 Com
4/4 White Oak #2 Com
4/4 White Oak 7' FAS/1F
6/4 White Oak PRIME
8/4 White Oak PRIME
4/4 Red Oak FAS/1F
5/4 Red Oak FAS/1F
6/4 Red Oak FAS/1F
8/4 Red Oak FAS/1F
4/4 Hickory FAS/1F
8/4 Hickory FAS/1F
4/4 Soft Maple FAS/1F

T/L's • Mixed T/L's • Export Prep •

More information on our website ralumber.com
S2S and SLR1E available

Call: Anthony Hammond | Phone: 1-800-577-5576
Email: ahammond@ralumber.com

Asia Sales: Ling Walker | Email: lwalker@ralumber.com

4/4 Hard Maple #1 Com White
4/4 Poplar FAS/1F
4/4 Poplar #2Com
5/4 Poplar FAS/1F
6/4 Poplar FAS/1F
8/4 Poplar FAS/1F
10/4 Poplar FAS/1F
12/4 Poplar FAS/1F
4/4 Ash #1Com
4/4 Ash #2Com
4/4 Walnut FAS/1F
8/4 Walnut FAS/1F
8/4 Walnut #1Com



NHLA



MAYFIELD LUMBER

WHITE OAK

4/4 Sel 6' 11M'
4/4 FAS 8'/7' 44M'
5/4 Sel 6' 2M'
5/4 FAS 8'/7' 47M'

CHERRY

4/4 FAS 25M'
4/4 1C 80M'
6/4 FAS 13M'
8/4 FAS 24M'

WALNUT

5/4 2C 33M'
6/4 22M'
8/4 41M'
4/4 FAS 58M'

HICKORY

8/4 FAS 36M'

RED CEDAR

8/4 16M'

O: 931-668-3252 | M: 931-212-6700

McMinnville, TN

www.mayfieldlumber.com



Yoder Lumber

Quality is Our Tradition

We have the following species available in kiln dried Appalachian Hardwood lumber:

- Red Oak
- White Oak Quarter Sawn
- Poplar
- White Oak Flat Sawn
- Hard Maple
- Soft Maple

Ray Miller 330-893-3121 EXT. 101

o Email: raym@yoderlumber.com

Karl Schmertzler 828-244-5767

o Email: karls@yoderlumber.com

**BUYING
BLACK LOCUST
& SASSAFRAS**

**All grades and cants
KD
and/or Green**

**Please Text or Call
404.915.4474**

**DRYTEC
HARDWOODS LLC**

7895 50th Ave. | Sears, MI 49679
Ph: 231-734-2343 | Fax: 231-734-2361
drytec@upwardmail.com

Kiln Dried Lumber for Sale

Red Oak Fas/1F & 1 Com

Aspen S&B & 1 Com

White Oak Fas/1F & 1 Com

Custom Drying & Export Prepping

PROMARK

**QUALITY HICKORY
LUMBER**

CONTACT INFO:

ALAN MEEK SALES/
PROCUREMENT
ALAN.MEEK@DADDARIO.COM | 931.263.2814

LEARN MORE ABOUT PROMARK'S LANDMARK REFORESTATION PROGRAM AT DADDARIO.COM/PLAY-PLANT-PRESERVE



*Sawing and drying fine
Appalachian Hardwoods for distributors
all over the world for over 40 years.*

KILN DRIED STOCKLIST

1 T/L 4/4 Poplar FAS/1F

1 T/L 4/4 White Oak FAS/1F

1 T/L 5/4 Red Oak FAS/1F

3 T/L 6/4 Red Oak FAS/1F

Contact Joe Pryor 828-926-1621
mail@oaksunlimited.com

3530 Jonathan Creek Road Waynesville, NC

WANTED TO BUY GREEN

RED OAK: 4/4, 6/4, 8/4

FAS/1F+BTR

WHITE OAK: 4/4 1C+BTR

6/4, 8/4, 10/4

FAS/1F+BTR

Please contact: William Miller
Ph 814-547-2977 • Fax 716-945-1531
SALAMANCA LUMBER CO., INC.
P. O. Box 416
Salamanca, NY 14779

Olson Search International

The Forest Products Group

JON OLSON

jon@olsonsearch.com

Tel: (800) 985-5191

Providing the best custom search and recruitment services for the hardwood industry with the complete range of career opportunities throughout North America and Europe.

(Fee paid by employer)

signumat
TAGGING TECHNOLOGY

CALL SIGNUMAT 443-632-5398

www.americansignumat.com • cs@americansignumat.com



LOG TAGS



Midwest HARDWOOD

C O M P A N Y

inquiries@midwesthardwood.com
763-425-8700

- Each pack VisionTally at each location
- Northern and Appalachian Hardwoods

Walnut

8,000'4/4 Prem. Arch	90/70
52,000'4/4 VQ Oak Rules	90/90
39,000'4/4 Rustic 6"	
22,000'4/4 Rustic	
28,000'4/4 S&B	90/70
24,000'4/4 S&B	Q Sawn
11,000'5/4 #1C	
18,000'5/4 VQ Oak Rules	90/90
4,000'5/4 Rustic	
10,000'5/4 S&B	Q Sawn
5,000'6/4 #2A	
51,000'6/4 VQ Oak Rules	90/90
9,000'6/4 FAS/1F	Q Sawn
4,000'6/4 Rustic	
20,000'8/4 VQ Oak Rules	90/90
10,000'8/4 FAS/1F	Q Sawn

Red Oak

39,000'4/4 #1C	
18,000'4/4 #1C	Rift Sawn
16,000'4/4 #3B	
10,000'4/4 S&B	CND
20,000'4/4 S&B	Rift Sawn
19,000'4/4 Select	
16,000'5/4 #1C	
6,000'5/4 #1C	R&Q Sawn
4,000'5/4 FAS/1F	
34,000'5/4 S&B	
4,000'6/4 #2A	
11,000'8/4 #1C	
5,000'8/4 FAS/1F	
23,000'8/4 S&B	

American Beech

CALL FOR AVAILABILITY

White Pine

CALL FOR AVAILABILITY

Aromatic Cedar

4,000'4/4 #1C & Btr

Aspen

CALL FOR AVAILABILITY

Alder

CALL FOR AVAILABILITY

Baltic White Birch

CALL FOR AVAILABILITY

Basswood

28,000'4/4 #1C	
7,000'4/4 #2A	

White Oak

6,000'4/4 #3A	
52,000'4/4 FAS/1F	
9,000'4/4 FAS/1F	PD1
11,000'4/4 FAS/1F	Rift Sawn
45,000'4/4 Rustic 9"	
7,000'4/4 Rustic	
10,000'4/4 Rustic	
34,000'4/4 S&B	
6,000'4/4 VENQ	
11,000'5/4 #1C	Q Sawn
10,000'5/4 #1C	Rift Sawn
19,000'5/4 FAS/1F	
4,000'5/4 Rustic	
11,000'5/4 S&B	Q Sawn
14,000'5/4 S&B	Rift Sawn
10,000'6/4 #1C	
7,000'6/4 Rustic	
10,000'6/4 S&B	Q Sawn
6,000'8/4 Rustic	
9,000'8/4 S&B	Q Sawn

Cherry

11,000'4/4 #1C	
10,000'4/4 #1C	90/90
16,000'4/4 #2A	
11,000'4/4 Cab. Grade	
13,000'4/4 Rustic	
7,000'4/4 S&B	
5,000'4/4 S&B	90/90
12,000'4/4 S&B	Sap1f
5,000'4/4 Select	
4,000'8/4 S&B	90/50

White Ash

4,000'5/4 FAS/1F	
4,000'8/4 #2A	
10,000'8/4 S&B	

Black Ash

7,000'5/4 #1C	
5,000'5/4 #2A	
13,000'5/4 S&B	

Yellow Birch

24,000'4/4 S&B	
11,000'4/4 S&B	Sap1f
4,000'8/4 S&B	

Hard Maple

5,000'4/4 #1C	#3 Wht
4,000'4/4 #1C	Birdseye FP
13,000'4/4 #1C	Brown
19,000'4/4 #1C	Prem Paint
10,000'4/4 #2&3A	Brown
41,000'4/4 #2A	#1 Wht
7,000'4/4 #2A	Brown
4,000'4/4 FAS/1F	#1 Wht
13,000'4/4 FAS/1F	#1&2 Wht
7,000'4/4 S&B	#1 Wht
51,000'4/4 S&B	#1&2 Wht
6,000'4/4 S&B	Brown
11,000'4/4 S&B	Premium Paint
6,000'5/4 #2A	#1&2 Wht
42,000'5/4 S&B	#1&2 Wht
28,000'6/4 S&B	#1&2 Wht
42,000'8/4 S&B	#1&2 Wht

Soft Maple

9,000'5/4 #1C	
4,000'8/4 S&B	Sap1f
11,000'4/4 #1C	Brown
51,000'4/4 #1C	Sap1f
11,000'4/4 #1C&Btr	WHND
6,000'4/4 #2A	Sap1f
19,000'4/4 S&B	Curly
54,000'4/4 S&B	Sap1f
5,000'5/4 #1C	Sap1f
17,000'5/4 S&B	Sap1f
5,000'6/4 #1C	Unsel
20,000'6/4 S&B	Sap1f
6,000'8/4 S&B	Paint Grade

Hickory

9,000'4/4 Rustic	Sap1f
8,000'8/4 FAS/1F	

Yellow Poplar

30,000'4/4 #1C	
30,000'4/4 FAS/1F	
7,000'6/4 S&B	

White Birch

5,000'4/4 #1C	CND
6,000'4/4 #2A	
5,000'4/4 S&B	Fleck Free

*Many other items in process. If you see something not listed, please call.





SALES
John Scott
johns@andersontully.com
601.618.2000
Geoff Henderson
geoffh@andersontully.com
601.618.4403

PURCHASING
Richard Wilkerson
richardw@andersontully.com
601.218.8104

WEST COAST SALES
Mike Born
MBorn@andersontully.com
909.518.1441

<https://atlumber.com/>

Current Inventory

Species	Grade	Footage	Species	Grade	Footage
8/4 ASH	FAS (8-9')	32,000	4/4 HACKBERRY	FAS	14,000
8/4 ASH	2C	28,000	5/4 PECAN/ HICKORY	FAS	24,000
4/4 COTTONWOOD	2C	30,000	5/4 PECAN/ HICKORY	1C	21,000
4/4 CYPRESS	2C 8"	15,000	5/4 RED OAK	FAS	15,000
4/4 CYPRESS	2C 6"	15,000	5/4 RED OAK	1C	20,000
4/4 CYPRESS	SEL&BTR	15,000	6/4 SYCAMORE	1C	9,400
4/4 FIJIAN MAHOGANY	FAS	4,000	5/4 WHITE OAK	FAS	15,000
8/4 FIJIAN MAHOGANY	FAS	16,000			

100,000' 8/4 ASH
currently in kilns



Timber Products

DIMENSION: Rips and Blanks

Species:
Hard Maple and Soft Maple

Thickness: 4/4 (15/16 S2S)

Width range: 1.5" – 6.25"

Length range: 12" – 98"

Glue-line quality edges

Michigan Hardwood Operations
East State Hwy 28,
Munising, MI 49862

Contact Sam Stenerson
360-970-1744 (cell)

ssstenerson@timberproducts.com



Phone: 570-374-1108

FAX: 570-374-5342

<http://www.BingamanLumber.com/HMR>

E-Mail: sales@bingamanlumber.com

Kreamer, PA

S2S – SLR – DIMENSION
"We Welcome Your Inquiries"

PENNSYLVANIA HARDWOODS FOR SALE

1 T/L 4/4 Basswood Prime KD RWL

1 T/L 4/4 Cherry 1 Com KD 90/50+

1 T/L 4/4 Cherry 2 Com KD 90/50+

1 T/L 4/4 Poplar Prime KD RWL

1 T/L 4/4 Poplar Prime KD RW x 7'

1 T/L 4/4 Poplar Comsel KD 6'

1 T/L 5/4 Poplar Prime KD RW x 7'

1 T/L 4/4 Red Oak Selects KD 3.5-4.5" wide

1 T/L 4/4 Hard Maple SAP/BTR RWL

1 T/L 4/4 Soft Maple Prime SAP/BTR RWL

1 T/L 4/4 Soft Maple 1Btr WORMY RWL

1 T/L 4/4 Yellow Birch Prime 7-8'

1 T/L 4/4 White Oak Prime KD 7-8'

1 T/L 4/4 White Oak Selects KD 4.5-5" wide

8,000' 4/4 White Oak Prime KD 6'

**FOB Kreamer and Clarendon,
PA locations.**

Call for your FSC Certified inquiries.
Call with your Thermo Treated Hardwood needs.
Surfacing and Ripping available. All listings subject to Prior Sale.



RANDOM LENGTHS
Yardstick

YARDSTICK IS HERE!

**HMR subscribers can
access the Yardstick by
logging onto hmr.com.**

Yardstick is the monthly
measure of North American
forest products statistics and
the economic engines that
power the industry.

This special, expanded
publication from Random
Lengths now covers
softwoods and hardwoods.

When data matter, rely on
Random Lengths and HMR
– A part of Fastmarkets.



**"Selling High Quality, Kiln Dried Hard Maple,
Soft Maple, Red Oak, and Basswood."**

Call for pricing and availability
800-352-1438

www.kretzlumber.com



NHLA





Granite Falls – North Carolina

Be part of our cutting-edge company
committed toward growth.
Applicants should submit their resume to
whitener@associatedhardwoods.com

Position Opening:

GREEN LUMBER BUYER

Associated Hardwoods is seeking a
GREEN HARDWOOD LUMBER
buyer to join our team.
The territory includes
TN, KY, OH, IN, and GA.

BENEFITS

- GREAT PAY
- 401K
- HEALTH INSURANCE
- PAID VACATION
- VACATION BONUS
- COMPANY TRUCK
- EXTRAORDINARILY SUPPORTIVE TEAM
AND WORK CULTURE

REQUIREMENTS:

- Must live in territory
- Frequent overnight travel
- Must be self-motivated, comfortable working
independently with little supervision and
possess an abundance of perseverance

JAMES RITTER LUMBER CO. INC.

(O) 606-875-0902 (F) 502-714-7311

(C) 606-875-0902

POPLAR – RED OAK & ASH

4/4

NOTHING CUT AGAINST IT!

A VARIABLE PLETHORA OF WIDTHS

ALL GRADES

INSPECTED WITH SKILL

&

MEASURED WITH SKILL & INTEGRITY

DISTRIBUTION YARD QUALITY

EVERY LOAD

EVERY TIME

THANKS FOR LOOKING.

ROBERT OUSLEY

robert@jamesritterlumber.com



“FROM OUR
FOREST
TO YOUR
FACILITY”

CLARK LUMBER CO., INC.

Specializing in

APPALACHIAN HARDWOOD LUMBER

www.clarklumbercompany.com

552 Public Well Road

Red Boiling Springs, TN 37150

PHONE: 615-699-3497

EMAIL: info@clarklumbercompany.com

Call or Email: Brandon Clark: bclark@clarklumbercompany.com

Joseph Draper: jdraper@clarklumbercompany.com

KD ITEMS AVAILABLE

THERMALLY MODIFIED POPLAR AVAILABLE

4/4 ASH

FAS, 1 COM, 2 COM

4/4 FRAMESTOCK

ROUGH AND S2S

4/4 HARD MAPLE

FAS, 1 COM, 2 COM

4/4 HICKORY

FAS, 1 COM, 2 COM

5/4 HICKORY

FAS, 1 COM, 2 COM

4/4 POPLAR

FAS, 1 COM, 2 COM

6/4 POPLAR

FAS, 1 COM, 2 COM

12/4 POPLAR

FAS

4/4 WHITE OAK

FAS, 1 COM, 2 COM

6/4 WHITE OAK

FAS, 1 COM

4/4 RED OAK

FAS, 1 COM, 2 COM

6/4 RED OAK

FAS, 1 COM

8/4 RED OAK

FAS, 1 COM

4/4 & 6/4 WALNUT

FAS, 1 COM, 2 COM

3 SAWMILL
LOCATIONS
5,000,000 BF
INVENTORY
900,000' KILN
CAPACITY



Buying or Selling Stock? Your Ad could be here!
Contact **Brian Cruzen** 901-767-9126 ext.2
or email brian.cruzen@fastmarkets.com





BUCHANAN HARDWOODS

www.buchananhardwoods.com

RED OAK

4/4 FAS		29M'
4/4 FAS	12" & Wider	12M'
4/4 Sel Strips	3.5" - 5.5" RL	27M'
4/4 #1 Com		146M'
4/4 #2 Com		5M'
5/4 FAS		0M'
5/4 #1 Com		0M'
5/4 #2 Com		0M'

ASH

4/4 FAS		3M'
4/4 FAS	10" & Wider	0M'
4/4 #1 Com		7M'
4/4 #2 Com		35M'

RED GUM

Sel&Btr		4M'
---------	--	-----

WHITE OAK

4/4 FAS	RWL	70M'
4/4 FAS	10" & Wider (13-16')	15M'

4/4 #1 Com	RWL	290M'
4/4 #2 Com		110M'
5/4 FAS		0M'
5/4 FAS	10" & Wider	0M'
5/4 #1 Com		0M'
5/4 #2 Com		5M'

POPLAR

4/4 FAS	RWL	36M'
4/4 FAS	12" & wider	0M'
4/4 #1 Com		4M'
4/4 #2 Com		0M'
8/4 FAS		3M'

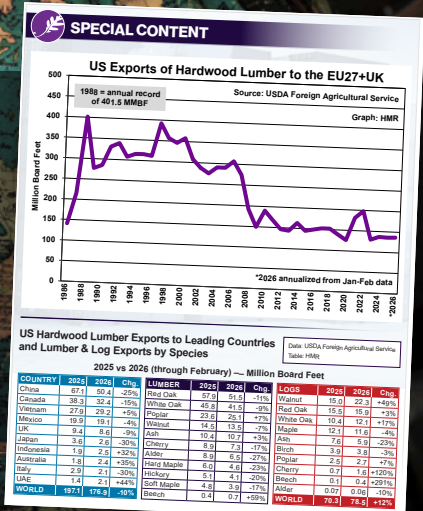
Jim Bailey • Email: jim@buchananhardwoods.com 205-779-7037

Alex Smith • Email: alex@buchananhardwoods.com 205-779-7040

Elite

Coming up next week ...

International Markets: tables on lumber and log exports, top lumber market destinations, and data relevant to business conditions.



A part of



It is illegal to photocopy, reproduce, sell, publish, broadcast, or transmit this publication in any way, in whole, or in part, without the express written permission of the owner. This publication is copyrighted under the statutes of the United States. The compilation of facts and information provided herein is the subject of private property rights of the publisher and is protected by copyright and intellectual property laws. Prices published in Hardwood Market Report are presented only as a guide. Prices and commentary are based on unjudged, independently gathered information from a wide range of dependable industry sources. Listed prices are estimates compiled from data that represent current transactions and/or trends, and are not designed to predict future prices. Actual prices may differ due to variations in quality, volume, area location, freight considerations, specifications, or other circumstances.